

4 June 2018

# 2017

## *Annual Report of the IPS*



Secretary General's Review  
Report of the Executive Board  
Reports of Commissions and Expert Groups  
Reports of National Committees  
Financial Statements 2017  
Auditor's Report



The amount of photographs in the Annual Report has been reduced to follow EU GDPR regulations as of 25 May 2018. If you want to give permission to be visible in IPS publications, our website and social media, please state this by email to [susann.warnecke@peatlands.org](mailto:susann.warnecke@peatlands.org).



## Annual Report 2017

International Peatland Society  
Nisulankatu 78 B  
40720 Jyväskylä, Finland  
[www.peatlands.org](http://www.peatlands.org)  
+358 40 418 4075

Cover photo:  
Dunnottar castle during the Aberdeen Convention  
All other photos: Susann Warnecke, if no other  
photograph mentioned

The Executive  
Board and  
observers in  
Aberdeen.

# Secretary General's Review

With its new lean structure and its three commissions on the economy, environment and society, the IPS reflects a statement given at the UN Conference on Environment and Development in Rio in 1992:

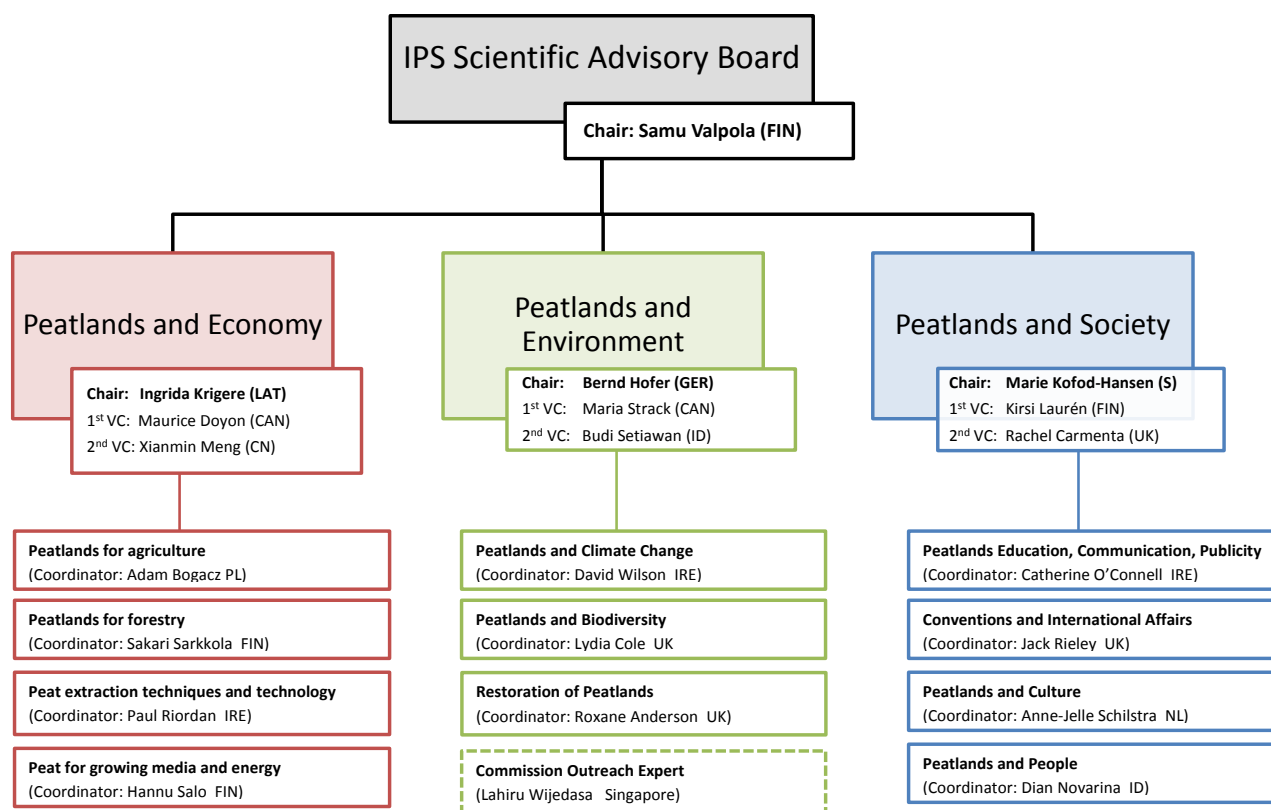
*'Protection of the environment is only feasible if politics consider economic and social aspects at the same time. If any pillar is weak then the whole system of Sustainable Development is not sustainable.'*

As a non-governmental organization (NGO) of individual researchers and scientists, as well as corporate, institutional and student members, the IPS is dedicated to the responsible management and Wise Use of peatlands. As



Gerald Schmilewski

## The Scientific Advisory Board (SAB) of the International Peatland Society (IPS), its Commissions and Expert Groups



Compiled by G. Schmilewski



such, the IPS encompasses all three pillars of Sustainable Development, according to the UN, with a holistic view on the use and non-use of peatlands. This we all need to bear in mind, although, as individuals, we are usually engaged in specific areas of expertise.

My advice: take off your glasses and try to look through the ones of your counterpart to better understand her or his viewpoint.

On the one hand, 2017 was characterized by setting up the expert groups for our three commissions and recruiting coordinators for their expert groups. I am highly satisfied with the result of this important task and congratulate Samu Valpola as Head of the Scientific Advisory Board (SAB) and the commission chairs for the effort they have put into this. The graph on page 3 gives an overview of current SAB staffing.

On the other hand, and on behalf of all members, the IPS was obliged to continue its long tradition of involvement in global peatland issues and the numerous conventions dealing with peatlands and peat.

In 2017, the IPS became a Partner of the Global Peatlands Initiative (GPI) and is represented on the GPI Steering Committee. Below are some of the events in which the IPS was engaged in the last year:

- Ramsar (STRP) meeting in Gland, Switzerland, February
- 'Soil Organic Carbon' Global Symposium, Rome, May
- Second GPI Partners meeting, Jakarta, May
- Global Landscapes Forum, Jakarta, May
- ISHS/IPS Symposium on Growing Media, Portland, USA, August
- First Tropical Peatland Roundtable, Jakarta, resulting in the 'Jakarta Declaration' on the responsible management of tropical peatland, November

There are also some projects on which the IPS began work in 2017. The project proposal 'Peat Moss Cultivation and Harvesting for Horticulture and Restoration' was submitted to the COST programme (European Cooperation in Science & Technology), while the three-part 'Peat for Food and Quality of Life' project started its first part last autumn on the peat demand forecast for China.

Much has been achieved in 2017 and much more will be tackled in the near future. One such achievement will be the organization of the 50th IPS Jubilee, to be held in Rotterdam in September, which lies in the hands of the Dutch National Committee. Right up front, on 10 September 2018, the IPS' 'Global Peatlands and Peat Industry Summit' will be another outstanding event.

We must not forget that the IPS is an NGO and all the expert work within it is executed by members of the Executive Board (EB), the SAB and its expert groups, as well as other members working on a voluntary basis. Our objective is to support the implementation of the IPS Strategy 2016-2020 and the Strategy for Responsible Peatland Management. Thank you to everyone for moving the IPS forward! My special thanks go to our Communications Manager, Susann Warnecke, who is the backbone of the IPS. You are much appreciated, Susann!

Last but not least, I want to especially encourage our young IPS researchers, scientists and company representatives to grab the available opportunities to engage in IPS work with facts, figures and continued enthusiasm. This kind of work is essential in order to bring balance to the understanding of peatlands.

*Gerald Schmilewski*

Acting Secretary General  
gerald.schmilewski@peatlands.org





# Report of the Executive Board

## Report of the Executive Board

### Main Activities

#### IPS Strategy and Structure

The Executive Board (EB) and the SAB of the IPS continued to implement the IPS Strategy 2016-2020. Much effort was especially given to improving the IPS structure and building networks, for instance, by staffing the three new commissions and their expert groups with volunteers who are eager to carry out practical activities for the IPS.

Furthermore, the IPS was largely present at international conventions and other meetings of global importance. The society is also strengthening its efforts in truly achieving geographical, gender and age balance across all of its bodies and activities.

#### Commissions

The work of the IPS is carried out by three commissions and their expert groups:

#### *Peatlands and Environment, Chair: Mr Bernd Hofer*

- Peatlands and Climate Change
- Peatlands and Biodiversity
- Peatland Restoration
- Outreach

#### *Peatlands and Economy, Chair: Mr Guus van Berckel (until January 2018)*

- Peatlands for agriculture
- Peatlands for forestry
- Peat harvesting techniques and technology
- Peat for growing media and energy

#### *Peatlands and Society, Chair: Mrs Marie Kofod-Hansen*

- Peatlands Education, Communication and Publicity
- Peatland Conventions and International Affairs
- Peatlands and Culture
- Peatlands and People

The IPS commissions and their expert groups foster information exchange, suggest projects and initiate



Executive Board members during the city tour of the autumn meeting in Poznań, Poland.





Opening session of the IPS Convention in Aberdeen.

international conferences and other events. Commission membership is informal and open to all IPS members - just contact the Chairs.

All commission chairs are members of the IPS' Scientific Advisory Board. The reports of the commissions and their contact details can be found in the Appendices.

### Conferences and Other Events

The 2017 Annual Convention was held from 28 to 31 May in Aberdeen, Scotland, UK, with 150 participants from 17 countries. This was a very successful symposium, offering parallel sessions on all peatland aspects, including nature conservation, restoration, culture and industry, and a large variety of excursions to nature, industry and cultural sights.

On 1-2 November, in cooperation with the Peatland Restoration Agency of Indonesia (BRG) and the Japan Peat Society (JPS), the IPS organized the first Tropical Peatland Roundtable in Jakarta and Palangka Raya, Kalimantan, with about 60 attendees. The event led to the publication of the Jakarta Declaration on responsible management of tropical peatland, which will be a milestone in the context of future peatland dialogue and capacity building in South East Asia.

Other conferences, workshops and field trips were organized by our national committees, for instance, in Canada, Finland, Germany and Poland.

The 2018 Annual Convention will be held in Rotterdam between 10 and 13 September as our 50th Jubilee Symposium, spiced up with a 'Global Peatland and Peat Industry Summit'. Yanji in China has been chosen as our venue for 2019, while the next International Peatland Congress will be held in 2020 in Tallinn, Estonia. For the 2024 Congress, the IPS has received three hosting applications - from the national committees in China, Ireland

and the Netherlands. The EB will give its recommendation in mid-April, followed by the official decision by the Annual Assembly in September 2018.

A list of IPS and related events can be found in the Appendices, while more information is included in the reports of the commissions and national committees.

### Conventions

As every year, the President, chairs of the commissions and EB members participated in important meetings of the Ramsar Convention on Wetlands, the United Nations Framework Convention on Climate Change (UNFCCC), the Global Peatland Initiative (GPI), and the Food and Agriculture Organization of the United Nations (FAO), to name a few. It is one of the tasks of the IPS to present science-based facts to decision makers. This can be best done in a face-to-face and balanced manner.

For instance, EB member Jack Rieley attended the Ramsar STRP meeting in Gland, Switzerland, in February, while President Gerald Schmilewski took part in the FAO Soil Organic Carbon Symposium in Rome in March, the GPI meeting in Jakarta, Indonesia and the Global Landscape Forum in Bonn, Germany in May.

He also attended the ISHS-IPS Growing Media Symposium in Portland, USA, in August, a Sphagnum Farming workshop in Germany in September and the Jakarta Tropical Peatland Roundtable. Commission Chair Bernd Hofer attended a CIFOR side event in Bonn, Germany in November.

Communications Manager Susann Warnecke took part in an excursion organized by the Finnish Peatland Society to Hossa National Park in August, as well as attended the Jakarta Roundtable, in addition to the regular EB and SAB meetings and Suoseura seminars.



## Project Plans

Further progress was made on the Peat Dialogue and Sphagnum Farming Projects. In December, the IPS started a project to investigate the demand for peat for horticultural purposes in China. In addition, statements by the UK Department for Environment, Food and Rural Affairs (DEFRA) the International Mire Conservation Group (IMCG), Scientific Certification Systems, Inc. (SCS), Responsibly Produced Peat (RPP), the Convention on Biological Diversity (CBD) and other organizations were analysed and commented on. Please see the commission reports in the Appendices for further details.

## IPS Membership

As of 31 December 2017, the IPS had 1,437 members in 41 countries, comprising 1,114 individual members, 230 corporations, 68 students as well as 14 research institutes and 11 governmental institutes. Most members of the IPS live in Germany, Finland, Indonesia and Poland. The membership database on the IPS intranet is updated in collaboration with our national committees and directly by our members, at least once a year.

The IPS is represented locally by 16 national committees with a total of 1,387 members. Of these, 11 operate in Europe, two in North America and three in Asia. There are currently 25 men and nine women serving as chairpersons and secretaries. For detailed statistics and contact details, please see the Appendix. National committees are registered associations in the most significant peatland countries, which represent environmental, societal and economic values and provide a forum for exchange on a local level.

In other countries, the IPS had 23 individual, 12 corporate, nine student, four honorary and two institutional members. Anyone interested can join the IPS at [www.peatlands.org/join-us](http://www.peatlands.org/join-us).

## Publications

### Peatlands International

Four issues of the IPS magazine were published in 2017 and distributed to our members by email. The Chief Editor was President Gerald Schmilewski, with editing and layout carried out by Communications Manager Susann Warnecke.

A few of our corporate members support the IPS by placing advertisements in the magazine. Members receive Peatlands International for free. The magazine is supported by an Editorial Board consisting of the following members in 2017, to be reviewed in 2018:

- Catherine Farrell, Ireland
- Marie Kofod-Hansen, Sweden
- Tom Malterer, USA (until April 2018)
- Juhani Päävänen, Finland
- Anne Jelle Schilstra, the Netherlands
- Paul Short, Canada
- Lech Szajdak, Poland
- Michael Trepel, Germany

Previous issues of Peatlands International can be found via the IPS document database (intra), while most of the printed issues (before 2013) can be ordered from the Secretariat.

To publish in the magazine, please contact [susann.warnecke@peatlands.org](mailto:susann.warnecke@peatlands.org). Deadlines are the end of February, May, August and November.

### Peatland Snippets

Peatland Snippets was published across 10 issues in 2017. The monthly electronic newsletter of the IPS is sent out by email to all members, which currently equates to approximately 1,200 email addresses.

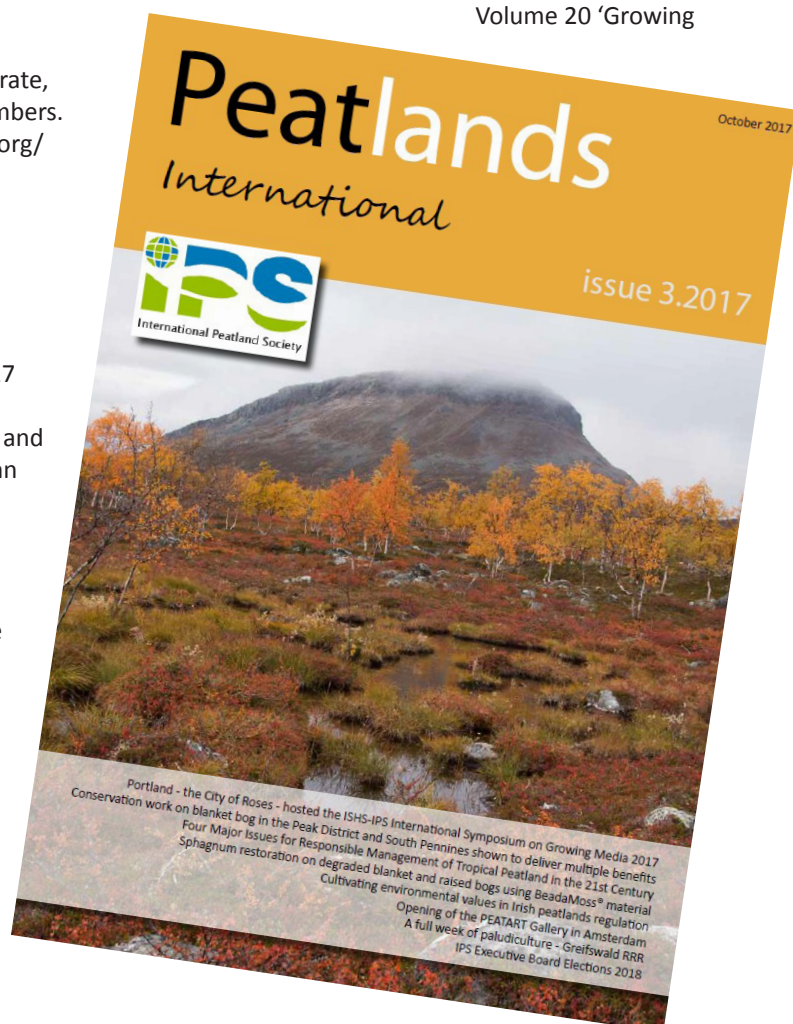
All previous newsletters can be downloaded from our members' intranet. Members and friends of the IPS are warmly welcome to contribute to the newsletter – just contact the IPS Secretariat.

### Briefing Notes

In 2017, the IPS started sending out Briefing Notes to all corporate members to inform them about current developments on an international level.

### Mires and Peat Scientific Journal

During 2017, Mires and Peat published 32 peer reviewed articles (493 pages) by authors from 47 countries. Standard Volume 19 contains 24 peer reviewed articles. The other eight published articles appeared in Special Volume 20 'Growing





Sphagnum' (113 pages), which will continue into 2018. The current (2016) Web of Science Impact Factor (IF), published in mid-2017, is 1.129.

During 2017, Jack Rieley continued as Deputy Editor-in-Chief (EIC), with Stéphanie Boudreau, Dicky Clymo, Stephan Glatzel, Ab Grootjans, Peter Jones and David Wilson as Editors, and Michael Trepel as Website Administrator. The Editorial Board also includes 28 Associate Editors who mostly contribute reviews, in addition to the EIC, Deputy EIC and Webmaster.

Launched in 2006, Mires and Peat is the peer-reviewed open-access scientific journal of the IPS and the IMCG, which is freely available to all those interested in peat, peatland and mire research. The IPS is supporting the journal with approximately €5,000 annually. The journal can be accessed free of charge from [www.mires-and-peat.net](http://www.mires-and-peat.net).

Mires and Peat is indexed by the Thomson Reuters Web of Science, Elsevier Scopus, EBSCO Environment Complete, CABI Abstracts, CSA and the Directory of Open Access Journals. Papers are DOI-numbered and safely archived via Portico.

High-quality papers are welcome to maintain this important publication. A new Deputy Editor will be recruited after the retirement of Jack Rieley within the next few years.

All printed issues of the former International Peat Journal, published until 2004, can still be ordered from the IPS website.

### Other Publications

The IPS' printed publications can be ordered directly from the Secretariat; a list is available at [www.peatlands.org/](http://www.peatlands.org/)

publications. The most popular books remain the Aberdeen 2017 Abstracts, Peatlands and Climate Change and Wise Use of Mires and Peatlands, as well as proceedings of previous symposia. It is planned to revamp the online store together with a new website for the IPS.

### IPS Website

The current pages at [www.peatlands.org](http://www.peatlands.org) contain, in the public section, basic information on the IPS, an events calendar, contact details for the EB, the commissions and national committees, general information on peat and peatlands, a list of publications, open positions, and other information on the society and its work.

For members, we offer an online document database for conference proceedings, brochures and other publications, a searchable member database and the option to post open positions. Additional resources are still needed to enable the uploading of all previous IPS proceedings to the document database. A full redesign of the website is needed.

### Social Media

The IPS is actively sharing information about its own and related activities, press articles and conference announcements via its Facebook and LinkedIn pages on a daily basis.

At the end of 2017, some 870 people were following IPS' information on Facebook, most of whom were not yet members of the society.

Those aged between 25 and 34 years comprise the most common age group among these followers. In November 2017, we also established a discussion group under the same page, which had 60 members as of early 2018.



Participants of the Annual Assembly in Aberdeen - 14 of 16 countries present.





Pristine mire and lake in Hossa National Park, Finland.

The IPS' LinkedIn group, which allows networking between around 300 peat and peatland professionals, has also proved a great tool for quickly sharing and collecting information, as well making new contacts. Members are also active on Twitter, Instagram, YouTube and Wikipedia, in both English and their own languages.

### Public Discussion

Climate change and biodiversity, as well as tropical peatland forest management, were important topics with respect to peatland management in the public eye in 2017. Other topics varied slightly from country to country.

The IPS regularly follows Google News and different Google Scholar alerts on peat, mire and peatland topics and shares these via email with the EB, SAB, experts and national committees, as well as in Peatland Snippets and on its Facebook page.

### Cooperation

In 2017, the IPS became a partner of the GPI, is represented on the GPI steering group and obtained observer status at the UNFCCC.

Furthermore, the IPS cooperated internationally with the Ramsar Convention on Wetlands, the FAO, the Society for Ecological Restoration (SER), the International Society for Horticultural Science (ISHS), the International Mire Conservation Group (IMCG), the Society of Wetland Scientists (SWS), as well as the Energy Peat Europe (EPE) and the Growing Media Europe (GME) associations.

Locally, the IPS cooperated with Jyväskylä Regional Development Company Jykes Ltd, the University of Applied

Sciences, the University of Jyväskylä, the Finnish Peatland Society, the Finnish Bioenergy Association and, of course, our national committees and industrial member associations worldwide.

### Finances and Funding

The IPS is fully funded by membership fees. These come mainly from its corporate member associations, totalling €111,900, and the national committee contributions of €28,400. The International Peat Congress in Kuching 2016 and the Annual Convention in Aberdeen 2017 resulted in commission payments of €38,900 and €5,000 respectively, which will be used over the next four years.

The Income Statement of the IPS shows a surplus of €81,200 for the 2017 financial year. This resulted mainly from the Congress income and savings in salaries of the Secretary General (vacant) and other account groups.

Bad debts amounting to €2,800 (unpaid invoices) had to be removed from the Income Statement. Receivables, mainly membership fees, amounted to €27,300 at the end of the year. The IPS keeps searching for additional core and project funding from outside sources.

The total income of the IPS was €200,500, with expenditure amounting to €118,800. The depreciation in the value of equipment amounted to €600 (25%). Assets and liabilities were €247,400 on 31 December.

More details can be found in the financial appendices. The accounts and financial statements of the IPS were audited by the Authorized Public Accountant, Arto Saarinen, from Crowe Horwarth.



## Administration

### Annual Assembly

The Annual Assembly of National Representatives was held on 31 May 2017 in Aberdeen, attended by representatives of 14 national committees (Canada, China, Estonia, Finland, Germany, Indonesia, Ireland, Japan, Latvia, Malaysia, the Netherlands, Sweden, the UK and the USA) and a few observers.

The Assembly approved new Statutes for the IPS and confirmed the Annual Report 2016, the Plan of Activities, Budget and Membership Fees 2017, as well as an interim budget and membership fees for 2018. The Assembly also elected the Auditors for the IPS for 2017.

### Executive Board

According to our Statutes, the EB consists of the President, the First and Second Vice Presidents and between two and six Ordinary Members. The members of the EB at the end of 2017 and their terms of office were as follows:

*President*  
*Gerald Schmilewski*  
2016-2020

*1st Vice President*  
*Guus van Berckel, the Netherlands*  
2016-2020

*2nd Vice President*  
*Samu Valpola, Finland*  
2016-2020

### Ordinary Members:

<i>Moritz Böcking, Germany</i>	<i>2014-2018</i>
<i>Erki Niitlaan, Estonia</i>	<i>2014-2018</i>
<i>Claes Rülcker, Sweden</i>	<i>2014-2018</i>
<i>Jack Rieley, United Kingdom</i>	<i>2016-2018</i>
<i>Donal Clarke, Ireland</i>	<i>2016-2020</i>
<i>Paul Short, Canada</i>	<i>2016-2020</i>

In addition, the EB has given observer status to representatives of all Asian national committees. Juhani Päivänen, Honorary President of the IPS, also has the right to attend all EB meetings.

The main administrative meetings of the IPS EB in 2016 were held in Lund, Sweden, on 2 March, in Aberdeen, UK, on 28 May, and in Poznan, Poland, from 10 to 11 October. Additional EB meetings were held by telephone on 18 January and 6 April 2017.

The decisions of these meetings were disseminated through Peatland Snippets and Peatlands International and by email to the national committees and commissions.

It is the intention of the EB and the Secretariat to reinstate 'decisions in a nutshell' summaries in the near future. In 2017, the EB agreed new Internal Regulations for its daily work. Six new EB members will be elected in 2018 and it is hoped to increase the share of non-Europeans, younger people and women to better represent all IPS members.

### Scientific Advisory Board

The SAB held its 2017 face-to-face meetings in Lund, Sweden, on 2 March and Aberdeen, UK, on 28 May, and



Peat extraction and wind turbine © Nick van de Griendt





in-between by email and phone. For early 2018, a kick-off meeting of the commission chairs and new expert group coordinators is planned in Amsterdam.

Chaired by Samu Valpola, the SAB consists of the three IPS commission chairs and the Second Vice President of the society. It provides the IPS with advice and information on matters of scientific, technical and cultural importance, drawing upon the pool of knowledge available from the commissions and elsewhere, along with promoting and disseminating research results.

The SAB normally meets twice a year in conjunction with other IPS meetings. As in previous years, the IPS has provided funding for travel of up to €500 per member.

Members of the SAB at the end of 2017 were:

*Chairman:*

*Samu Valpola, Finland, 2nd Vice President*

*Members:*

*Bernd Hofer*

*Marie Kofod-Hansen*

*Guus van Berckel*

*Secretary:*

*Susann Warnecke, IPS Secretariat*

### **Secretariat and Staff**

The IPS Secretariat is situated at the StartUp Leipomo centre for young enterprises at Nisulankatu 78 B, 40720 Jyväskylä, Finland; mobile: +358 40 418 4075; emails: [ips@peatlands.org](mailto:ips@peatlands.org) and [susann.warnecke@peatlands.org](mailto:susann.warnecke@peatlands.org).

President Gerald Schmilewski and Second Vice President Samu Valpola took over the tasks of Secretary General as of January 2017 after the departure of Mr Hannu Salo. Work is ongoing to fund and recruit a full-time Secretary

General, with about 90 corporate members contacted by post for additional support during autumn.

IPS Communications Manager Ms Susann Warnecke took care of the administration, communications, event management and finance of the IPS, supported by the accounting office TietoAkseli and other service providers.

For four weeks in summer, Ms Tuuli Timperi, a student, helped in uploading the proceedings of recent IPS Congresses to the intranet. In early 2017, the organization moved to a slightly smaller office room on the second floor to improve the working environment and save costs.

## **Honours**

### **Honorary Members**

At the end of the year, the IPS had 22 honorary members. Honorary membership is conferred by the EB on persons nominated by national committees who have made outstanding contributions to the IPS and to international cooperation on peatlands and peat.

These are currently:

*Belarus:*

*Canada:*

*Finland:*

*Germany:*

*Hungary:*

*Ireland:*

*Latvia:*

*Poland:*

*Russia:*

*United Kingdom:*

*USA:*

*Ivan I. Lishtvan*

*Jean-Yves Daigle, Gerry Hood*

*Matti Hilli, Markku Mäkelä, Yrjö*

*Pessi, Juhani Päivänen,*

*Jaakko Silpola, Raimo Sopo*

*Hartmut Falkenberg*

*F. Baranyai*

*Paddy Hughes, P. McEvilly*

*Ansis Snore*

*Piotr Ilnicki*

*A.K. Dergunov, B.N. Sokolov*

*David Bellamy, Richard Clymo,*

*Neil Godzman*

*Don N. Grubich, Tom Malterer*



## Allan Robertson Grants

In 2017, the IPS sponsored the Allan Robertson Grants for Research Students and Young Professionals with €3,500. Funding was made available from the IPS budget and generous contributions from IPS members. The winners were, eight grants of €500:

- Measuring restoration progress using water chemistry in formerly afforested bogs, Paul Gaffney, Environmental Research Institute, University of the Highlands and Islands, UK
- Interactions between microtopography, habitat heterogeneity and plant nutrition on peatlands, Chris Hatcher, Loughborough University, UK
- Travel and registration fee for IPS 2017 (Visa application did not succeed), Hongxing He, Department of Earth Sciences, University of Gothenburg, Sweden - retained
- Carbon emissions from a thawing permafrost peatland, Liam Heffernan, University of Alberta, Canada
- Greenhouse gas emissions after Sphagnum harvesting: finding the study sites, Aino Korrensalo, University of Eastern Finland
- Soil organic carbon in Icelandic peatlands: formation, stability and decomposition, Susanne Claudia Möckel, University of Iceland, Faculty of Life and Environmental Sciences
- Research information dissemination and review of Lesotho wetlands(peatlands) monitoring protocols, Motseko Motsetse, National University of Lesotho
- Late Glacial and Holocene environmental changes in Western Polesie (Eastern Poland) recorded in the



Events and face-to-face meetings remain the backbone of the IPS.

sediments of alkaline fens, Jarosław Pietruczuk, Maria Curie-Skłodowska University in Lublin, Poland

The deadline for the 2018 Allan Robertson Grants is 31 January. See also [www.peatlands.org](http://www.peatlands.org) for more information on the grants, and read the short terms of reference before applying.



Roundable Excursion highlight: planting tree seedlings in a degraded peatland area in Kalimantan, Indonesia.



# Peat and Peatland Events

*of the IPS, its National Committees and partners*

## **IPS Executive Board Meeting**

**18 January, 14 - 16 hrs**

**by phone**

2 February 2017

World Wetlands Day

[www.ramsar.org](http://www.ramsar.org)

Ramsar STRP meeting (STRP20)

Gland, Switzerland

13 - 17 February 2017

[www.ramsar.org](http://www.ramsar.org)

International Conference on Climate Change 2017

(ICCC 2017)

Climate Change, Facing the challenge beyond COP21

Colombo, Sri Lanka

16 - 17 February 2017

<http://climatechangeconferences.com>

23rd PERG Symposium

Université Laval, Québec City

21 - 22 February 2017

[www.gret-perg.ulaval.ca](http://www.gret-perg.ulaval.ca)

IVG Media Day Gardening

Cologne, Germany

22 February 2017

[www.ivg.org](http://www.ivg.org)

## **Executive Board Meeting**

**Lund, Sweden**

**1 - 3 March 2017**

German National Committee

Workshop: Definition and Classification of Peatlands

Hanover, Germany

7 March 2017

[www.dgmtv.de](http://www.dgmtv.de)

Global Symposium on Soil Organic Carbon (GSOC17)

Rome, Italy

21 - 23 March 2017

[www.fao.org](http://www.fao.org)

Finnish National Committee, Seminar

Helsinki, 24 March 2017

[www.suoseura.fi](http://www.suoseura.fi)

53rd Session of the IPCC Bureau and 45th Session of the IPCC

Guadalajara, Mexico

26 - 31 March 2017

[www.ipcc.ch](http://www.ipcc.ch)

Blanket Bog and Climate Change

York, United Kingdom

28 March 2017

[www.britishecologicalsociety.org/event/workshop-blanket-bog-climate-change](http://www.britishecologicalsociety.org/event/workshop-blanket-bog-climate-change)

Nordic Baltic Bioenergy

Helsinki, Finland

29 - 30 March 2017

[www.nordicbalticbioenergy.eu](http://www.nordicbalticbioenergy.eu)

## **Executive Board meeting**

**Phone, 6 April 2017**

Global Peatlands Initiative side event

at UNFCCC SBSTA 46

Bonn, Germany

9 May 2017

[www.globalpeatlands.org](http://www.globalpeatlands.org)

German Peat and Peatland Seminar und Excursion

Zeven, Germany

12 - 13 Mai 2017

[www.dgmtv.de](http://www.dgmtv.de)

Global Peatlands Initiative

Jakarta, Indonesia

15 - 17 May 2017

[www.globalpeatlands.org](http://www.globalpeatlands.org)

German National Committee

Mire Conservation in Lower Saxony

Schneverdingen, Germany

17 - 18 May 2017

[www.dgmtv.de](http://www.dgmtv.de)

Global Landscapes Forum: Peatlands Matter

Jakarta, Indonesia

18 May 2017

[www.landscapes.org/peatlands](http://www.landscapes.org/peatlands)

German Peat and Peatland Society

Naturschutzfachliche Leitplanken für Tourismus und

Umweltbildung an und in Mooren

Drübeck, Harz, Germany

22 - 24 May 2017

[www.dgmtv.de](http://www.dgmtv.de)

Wood Meadows & Pastures

Sheffield, United Kingdom

23 - 24 May 2017

[www.britishecologicalsociety.org/event/wood-meadows-pastures](http://www.britishecologicalsociety.org/event/wood-meadows-pastures)





← next year!

CGU and CSAFM Joint Annual Scientific Meeting  
Vancouver, Canada  
28 - 31 May 2017  
[www.cgu-ugc2017meeting.ca](http://www.cgu-ugc2017meeting.ca)

**Annual Convention 2017**  
**Aberdeen, Scotland, Scotland**  
**28 - 31 May 2017**  
**[www.peatlands2017.net](http://www.peatlands2017.net)**

German National Committee  
Information Exchange: Water Management and Mire  
Conservation  
Schüberg, Hamburg, Germany  
6 - 7 June 2017  
[www.dgmtev.de](http://www.dgmtev.de)

Transdisciplinary Conversations on Peat and  
Peatlands  
History-Heritage-Science-Culture-Management-Restoration  
Cork, Ireland  
8 July 2017  
<https://call-for-papers.sas.upenn.edu/cfp/2017/03/14/transdisciplinary-conversations-on-peat-and-peatlands>



Acting Secretary Generals Samu Valpola and  
Gerald Schmilewski visiting Susann Warnecke at  
the IPS Secretariat in Jyväskylä.

Fen Peatlands After Drainage – organic soils in  
mountain areas  
Kudowa Zdrój, Poland  
10 - 13 July 2017  
<http://uwm.edu.pl/peat/>  
[barbara.kalisz@uwm.edu.pl](mailto:barbara.kalisz@uwm.edu.pl)

Conservation and Management of Wetland Habitats  
Riga, Latvia  
11 - 12 July 2017  
[www.mitraji.lv](http://www.mitraji.lv)

Finnish National Committee (Suoseura)  
Summer field trip  
Hossa National Park, leaving from Oulu  
16 - 17 August 2017  
[www.suoseura.fi](http://www.suoseura.fi)

IMCG field symposium  
Mires of the Northern Part of European Russia  
22 July - 4 August 2017  
[www.imcg.net](http://www.imcg.net)

**ISHS-IPS Joint International Symposium on Growing Media,  
Soilless Cultivation, and Compost Utilization in Horticulture**  
**Portland, Oregon, USA**  
**20 - 25 August 2017**  
**<http://newbeginningsmanagement.com/compsubsci2017>**

10th International Carbon Dioxide Conference  
21 - 25 August 2017  
Interlaken, Switzerland  
[www.icdc10.unibe.ch](http://www.icdc10.unibe.ch)

Society for Ecological Restoration (SER)  
7th World Conference  
Foz do Iguassu, Brazil  
27 August to 1 September 2017  
[www.ser.org](http://www.ser.org)

Green is Life Expo  
Warsaw, Poland  
31 August - 2 September 2017  
[www.greenislife.pl](http://www.greenislife.pl)

Wilder Visions - Peatlands for Birds: Issues & Opportunities  
in Re-constructing Peat Landscapes in Uplands and Lowlands  
Sheffield, UK  
6 - 8 September 2017  
[www.ukeconet.org/peatlandsforbirds.html](http://www.ukeconet.org/peatlandsforbirds.html)

Ina-peat  
National Seminar on Peatlands  
Palangkaraya, Indonesia  
6 - 8 September 2017  
[budindra@ipb.ac.id](mailto:budindra@ipb.ac.id)

Wood and Bioenergy  
Jyväskylä, Finland  
6 - 8 September 2017  
[www.bioenergiamessut.fi](http://www.bioenergiamessut.fi)



IUFRO 12th Anniversary Congress  
Freiburg, Germany  
18 - 22 September 2017  
[www.iufro2017.com](http://www.iufro2017.com)

German Peat and Peatland Society  
Annual Assembly and Excursions  
Deuselbach, Hunsrück  
20 - 23 September 2017  
[www.dgmtev.de](http://www.dgmtev.de)

Carbon Cycling in Boreal Peatlands and  
Climate Change II – Hyttiälä revisited  
Hyttiälä, Finland  
25 - 29 September 2017  
[aino.korrensalo@uef.fi](mailto:aino.korrensalo@uef.fi)  
[harri.vasander@helsinki.fi](mailto:harri.vasander@helsinki.fi)

2nd International conference on the utilization of wetland  
plants RRR2017: Renewable resources from wet and  
rewetted peatlands  
Greifswald, Germany  
26 - 28 September 2017  
[www.paludiculture.uni-greifswald.de/en/projekte/rrr2017](http://www.paludiculture.uni-greifswald.de/en/projekte/rrr2017)

3rd international Sphagnum farming workshop  
Lower Saxony, Germany  
29 - 30 September 2017  
[www.paludiculture.uni-greifswald.de/en/projekte/rrr2017/iWSSF.php](http://www.paludiculture.uni-greifswald.de/en/projekte/rrr2017/iWSSF.php)

History & Heritage of the Bogs & Peatlands of Cumbria  
Eco-science in the Park: Shadow Woods and Ghosts on  
Peatland Landscapes  
Longshaw, UK  
7 October 2017  
[www.ukeconet.org](http://www.ukeconet.org)

**Executive Board Meeting**  
**Poznan, Poland**  
**10 - 11 October 2017**

German National Committee  
Rewetting of bogs in the Eider-Treene-Sorge Lowland  
Stiftung Naturschutz und LLUR Schleswig-Holstein  
in cooperation with DGMT  
12 - 14 October 2017  
[www.dgmtev.de](http://www.dgmtev.de)

**Tropical Peatland Round Table & Field Excursion**  
**Jakarta & Palangka Raya, Indonesia**  
**1 - 4 November 2017**  
[www.peatlands.org](http://www.peatlands.org)

UNFCCC  
47th session of the Subsidiary Body for Implementation  
(SBI 47)  
Bonn, Germany  
6 to 15 November 2017  
[www.unfccc.int/meetings/bonn\\_nov\\_2017/session/10379.php](http://www.unfccc.int/meetings/bonn_nov_2017/session/10379.php)







Finnish scientists and peat professionals during the Hossa excursion in Finland.

IVG Forum Gartenmarkt  
German Gardening Industry Association  
Berlin, Germany  
8 November 2017  
[www.ivg.org/forum-gartenmarkt-2017](http://www.ivg.org/forum-gartenmarkt-2017)

Multiple use of Finland's forests and peatlands  
Helsinki, Finland  
14 November 2017  
[anne.tolvanen@luke.fi](mailto:anne.tolvanen@luke.fi)

Technical workshop for review of the voluntary guidelines for the design and effective implementation of ecosystem-based approaches to climate change adaptation and disaster risk reduction  
Bonn, Germany  
20 - 22 November 2017  
[www.cbd.int](http://www.cbd.int)

International Conference on Climate Smart Agriculture on Organic Soils  
Uppsala, Sweden  
23 - 24 November 2017  
[www.slu.se/CAOSconference](http://www.slu.se/CAOSconference)

52. Deutsche Torf- und Humustag  
Bad Zwischenahn, Germany  
23 November 2017  
[www.ivg.org](http://www.ivg.org)

Paludiculture UK - Working with wetlands  
29 - 30 November 2017  
Murley Moss, Kendal, UK  
<http://ow.ly/C8qz30fTSIT>

Expert Workshop on Setting the course for EU policies on peatland climate mitigation  
Brussels, Belgium  
6 December 2017  
[www.caos-project.eu](http://www.caos-project.eu), [www.paludiculture.uni-greifswald.de/en/projekte/cinderella/index.php](http://www.paludiculture.uni-greifswald.de/en/projekte/cinderella/index.php)

German National Committee  
Sphagnum Identification seminar  
MoorInformationsZentrum Ahlenmoor, Germany  
9 - 12 December 2017  
[www.dgmtev.de](http://www.dgmtev.de)

CBD 21st Meeting of the Subsidiary Body on Scientific, Technical and Technological Advice (SBSTTA 21)  
Montreal, Canada  
11 - 14 December 2017  
[www.cbd.int](http://www.cbd.int)

Bioenergia ry Autumn meeting  
Helsinki, Finland  
13 December 2017  
[www.bioenergia.fi](http://www.bioenergia.fi)

CBD 10th Meeting of the Ad Hoc Working Group on Article 8(j) and Related Provisions (WG8J 10)  
Montreal, Canada  
13 - 16 December 2017  
[www.cbd.int](http://www.cbd.int)

Global Landscapes Forum  
Bonn, Germany  
19 - 20 December 2017  
[www.globalpeatlands.org](http://www.globalpeatlands.org)

[www.peatlands.org/events](http://www.peatlands.org/events)



# Members of the IPS

	Individual members	Corporate Members	Research Institutes, Universities	Governmental Institutes	Honorary Members	Students	TOTAL
Canada	9	27	0	0	2	1	39
China	37	0	0	0	0	0	37
Estonia	0	28	0	1	0	0	29
Finland	280	2	1	1	8	9	301
Germany	271	54	6	5	13	34	383
Indonesia	104	0	1	0	0	0	105
Ireland	32	5	0	1	2	1	41
Japan	50	2	0	0	0	2	54
Latvia	8	23	0	0	7	0	38
Lithuania	1	23	0	0	0	0	24
Malaysia	41	5	0	0	0	0	46
The Netherlands	60	15	2	1	2	4	84
Poland	98	3	0	0	1	0	102
Sweden	12	24	1	0	0	1	38
United Kingdom	24	4	1	1	2	5	37
USA	21	3	0	1	2	2	29
<b>31 December 2017</b>	<b>1048</b>	<b>218</b>	<b>12</b>	<b>11</b>	<b>39</b>	<b>59</b>	<b>1387</b>
31 December 2016	1067	230	13	11	38	59	1441
31 December 2015	1070	230	13	11	38	51	1413

	Individual Members	Corporate Members	Students	Honorary Members	Research Institutes, Universities	TOTAL
Argentina	0	1	0	0	0	1
Australia	1	0	2	0	0	3
Austria	0	0	1	0	0	1
Belarus	0	0	0	1	0	1
Belgium	1	1	0	0	0	2
Bosnia and Herzegovina	0	1	0	0	0	1
Brazil	1	0	1	0	0	2
Chile	0	0	1	0	0	1
Denmark	2	1	0	0	0	3
France	0	3	0	0	0	3
Hungary	5	0	0	1	0	6
India	0	0	1	0	0	1
Italy	4	0	0	0	0	4
Nigeria	1	0	0	0	0	1
Norway	1	2	0	0	1	4
Peru	0	0	1	0	0	1
Philippines	0	0	1	0	0	1
Romania	1	0	0	0	0	1
Russia	2	1	0	2	1	6
Singapore	1	0	1	0	0	2
Slovenia	1	0	0	0	0	1
Spain	2	1	0	0	0	3
Turkey	0	1	0	0	0	1
<b>31 December 2017</b>	<b>23</b>	<b>12</b>	<b>9</b>	<b>4</b>	<b>2</b>	<b>50</b>
31 December 2016	24	18	6	4	2	54
31 December 2015	19	14	2	5	2	42

	December 2017	December 2016	December 2015	December 2014	December 2013	December 2012	Balance
NC members	1387	1441	1413	1412	1454	1354	-54
Non-NC members	50	54	42	50	57	58	-4
	<b>1437</b>	<b>1495</b>	<b>1455</b>	<b>1462</b>	<b>1511</b>	<b>1412</b>	<b>-58</b>



# IPS Commissions

## Peatlands and Economy

Chair: Guus van Berckel (2017), Ingrida Krigere (2018)  
Latvian Peat Association  
Ernestines Str 24  
LV-1046 Riga  
LATVIA  
phone: + 371 2910 6008  
e-mail: ingrida@peat.lv

First Vice Chair:  
Maurice Doyon, maurice.doyon@eac.ulaval.ca

Second Vice Chair:  
Meng Xianmin, mengxm3711@163.com

### Expert Groups

Peatlands for Agriculture:  
Ryszard Oleszczuk -> Adam Bogacz,  
adam.bogacz@upwr.edu.pl

Peatlands for Forestry:  
Sakari Sarkkola, sakari.sarkkola@luke.fi

Peat Harvesting Techniques and Technology:  
Paul Riordan, paul.riordan@bnm.ie

Peat for Growing Media and Energy:  
Hannu Salo, hannu.salo@bioenergia.fi

2017 was the first year of the new commission structure of the IPS. During this year, the new structure was implemented and coordinators for the expert groups were appointed. During the Aberdeen Convention, the first meeting was organized and the main goals and tasks discussed. For governance reasons, it is critical to more effectively communicate the economic and social relevance of peat. This resulted in the 'Peat for food and Quality of Life Project'. This project consists of three parts:

- A peat demand forecast for China
- A worldwide peat demand forecast for the upcoming decades
- A study of worldwide available peat resources to match this demand

In cooperation with the other commissions, project descriptions and plans were developed for the 'Peat for Food and Quality of Life Project' and discussed with the EB. The first part of the project was completed in November 2017. Two Dutch students went to China to investigate the local demand for peat. The two other parts of the project are planned to be completed in the first part of 2018, when the EB will agree on the project plan and funds to be made available. Wageningen University is best placed to forecast the worldwide demand for peat.

## Peatlands and Environment

Chair: Mr Bernd Hofer  
Hofer & Pautz GbR  
Buchenallee 18  
D-48341 Altenberge  
GERMANY  
phone: +49 2505 937784 11  
e-mail: hofer@hofer-pautz.de

First Vice Chair:  
Maria Strack, mstrack@uwaterloo.ca

Second Vice Chair:  
Budi Indra Setiawan, budindra@ipb.ac.id

### Expert Groups

Peatlands and Climate Change:  
David Wilson, Ireland, david.wilson@earthymatters.ie

Peatlands and Biodiversity, (Ecology, Hydrology and Geology): Lydia Cole, UK, lydcole@googlemail.com

Peatland Restoration:  
Roxane Andersen (maternity leave), UK,  
roxane.andersen@uhi.ac.uk

Outreach and backup for Roxane:  
Lahiru Wijedasa, Singapore, lahirux@gmail.com

### Introduction

One year after the IPC in Malaysia and after setting up the new structure in the IPS, 2017 was a year characterized by the restructuring, finding phase and beginning of project work.

With Maria Strack from Canada and Budi Indra Setiawan from Indonesia, commission chairs are now covering the most important parts of the peat world. Three expert groups were created and staffed with coordinators.

These coordinators represent a good mix of long-time experience of IPS commission work and young scientists. Finally, we found an outreach expert for the commission, Lahiru Wijedasa.

For the upcoming months, Lahiru will, at the same time, represent the Restoration of Peatlands Expert Group until Roxane (currently on leave) is back on board.

### IPS Convention 2017 in Aberdeen, Scotland

During the Annual Convention of the IPS in Aberdeen on Sunday, 28 May, a parallel session of the three new commissions was held, at which the new structure and staff



of the commissions and expert groups were presented, along with the goals and tasks of all parties. The main objects of the expert groups are to inform via the commission, the Secretariat and national committees, and IPS members and staff about new developments to and support project work.

New IPS projects were also presented in Aberdeen:

- *IPS Peat Dialogue*

Unbiased dialogue between different stakeholders, in particular, the peat industry and eNGOs, about extraction of peat for growing media in Europe. If possible, common positions (middle-ground consensus) should be worked out and delivered to policy and decision makers.

- *IPS Peat for Food and Quality of Life*

Part 1: To address the demand forecast of peat in China (field study).

Part 2: To analyse the future peat demand for growing media production in the food production supply chain.

Part 3: To analyse potential peat resources from degraded peatlands in Europe.

- *IPS Wikipeat*

The IPS provides the opportunity for members to optimize or publish definitions and articles related to peatlands on Wikipedia and other Internet dictionaries. Every member is able to give some input with 'little' effort.

## First Tropical Peatland Roundtable in Jakarta and Palangka Raya, Indonesia

In early 2016, His Excellency the President of Indonesia, Joko Widodo, issued a regulation establishing the Peatland Restoration Agency (BRG) with the mandate of restoring two million hectares of peatland ecosystems in five years.

From 1 to 4 November 2017, the First Tropical Peatland Roundtable was organized by the IPS, the BRG and the JPS. From Commission 2, Lahiru Wijedasa and Bernd Hofer joined the meeting and field excursion to Palangka Raja.

Truly effective tropical peatland restoration in Indonesia will require the substantial development of an integrated peatland management system based on scientific and technical knowledge and information. Achieving this requires the establishment of an international committee for technical consultation to facilitate tropical peatland restoration action.

After two days of thorough discussion, a Principal Strategy of Responsible Management of Tropical Peatland was agreed. This includes five pillars of action:

- Establish a 'tropical peatland centre'
- Organize an 'international committee for technical consultation'
- Develop an 'integrated monitoring system'
- Conduct a 'model project' for responsible management
- Achieve capacity building

Meanwhile, the city of Bogor was chosen by the BRG to establish this centre, which is difficult to understand

because this location is far away from any peatland.

Commission 2 is asked to provide consultation on a variety of aspects, especially in terms of monitoring the succession of vegetation, fires and water table in the peat layer or the success of implemented measures. Another meeting on this topic is planned for February 2018 in Germany.

## COP23 Bonn 2017 - Side Event of the Indonesian Pavilion

The IPS (Commission 2, Environment) as a partner of the GPI took part in the side event 'Good Peatland Governance to Strengthen the Economic, Social and Ecosystem Resilience' of Indonesia at the UNFCCC COP23 in Bonn, Germany, under the leadership of the UN Environment. The event aimed to:

- Draw attention to peatlands as significant carbon sinks and potential carbon emissions sources.
- Share concrete experiences from Indonesia in advancing efforts to protect peatlands and other key tropical peatland countries
- Discuss and identify upcoming actions

HE Amy Ambatobe Nyongolo, Minister of Environment and Sustainable Development, Democratic Republic of Congo, HE Arlette Soudan-Nonault, Minister of Tourism and Environment, Republic of Congo and HE Dr Siti Nurbaya Bakar, Minister of Environment and Forestry, Indonesia gave statements about the situation of tropical peatlands, different interests of climate protection, and nature conversation and usage. International support is needed to realize a responsible management plan for those peatlands.

The IPS with three commissions covering the economy, ecology and society is more than an eNGO. This all-embracing approach is expected to develop sustainable solutions for challenging projects, such as the restoration of 2.5 million hectares of tropical peatlands in Indonesia or the huge area of newly discovered peatlands in Congo.

The IPS will provide a wealth of knowledge and experience from among its members to this very important project, which is related to geographical size and climate protection.

## NABU – RPP meeting in Berlin 2017

In December, the commission chair joined a meeting with the Secretariat of RPP, Wetlands International (WI) and Naturschutzbund Deutschland (NABU) in Berlin. Under





the umbrella of the IPS Peat Dialogue, RPP provided a development update on the certification system and consequences for the growing media industry. WI is one of the eNGOs involved in turning developments in this area into practice.

The main issue of the meeting was the discussion about the NABU position on RPP and the further stages of the IPS Peat Dialogue. A statement from NABU is expected at the end of January 2018.

## Expert Group for Peatlands and Biodiversity

The Peatlands and Biodiversity Working Group is one of the three expert groups of the IPS Commission on the Environment. It was officially launched in May 2017, along with the two other expert groups (Climate Change and Restoration), at the IPS Convention, which took place in Aberdeen, Scotland. The primary goals of the expert groups are to collect, summarize and publish information relevant to stakeholders interested in peatland environment issues, whether within or external to the IPS. This process is coordinated by the head of each expert group.

Although there is, and will continue to be, a significant overlap between the expert groups, the Peatlands and Biodiversity Group will aim to summarize and make accessible research findings on some of the following themes:

- Species diversity within peatlands
- Change in species diversity and abundance due to peatland degradation
- Biodiversity value of peatlands to stakeholder communities
- Impact of climatic change on floral and faunal communities found within peatlands.

Over the coming year, the heads of the expert groups will aim to increase their database of experts who are able and willing to contribute to information gathering and dissemination. Each expert contributes on a voluntary basis, with no commitment to a certain amount of time or involvement.

Members may also be asked to contribute to the drafting of the Peat Dialogue, a document providing guidance for responsible peat extraction, which can be referenced by the industry and used in the development of management policy by national governments. Once complete, this will represent a leading contribution on responsible peatland management by the IPS and may prove important for policy development within Europe and beyond.

There was a number of important developments related to peatland ecosystems and their biodiversity in 2017. Here is a small selection of the updates:

- In January, the 'World's largest tropical peatland' was 'found' in the Congo Basin by a UK-Congolese research team, with huge implications for global carbon and biodiversity conservation if disturbed.

- In July, members of the IPS discussed the need to 'develop alternative, more sustainable land-use practices' for tropical peatlands in the Pastaza-Marañón Foreland Basin in Peru and elsewhere, in order to prevent the loss of tropical peatland carbon stores and the biodiversity underpinning them.
- In October, researchers found that 'taxonomic and functional turnover are decoupled in European peat bogs', such that function remains, despite a change in plant taxonomy, which may promote resilience of this ecosystem in response to future environmental change.
- In November, the Jakarta Declaration was issued by the IPS, the BRG (now in its second year) and the JPS to 'promote action on the responsible management of tropical peatland'.
- In December, the Indonesian Government announced it is going to establish a Global Centre for Tropical Peatlands in Bogor, to perform research and provide information on one of the most biodiverse peatland regions in the world.

## Peatlands and Climate Change Working Group

The Peatlands and Climate Change Working Group was officially launched at the IPS Convention in Aberdeen, Scotland, in May 2017. However, prior to that date, efforts had already been made to populate the expert group. To date, 24 peatland researchers representing all climate zones have agreed to be part of the group.

At the IPS Convention in May, it was agreed that, given the significant overlap between this expert group and the two other expert groups in the Commission on Biodiversity and Restoration, the Peatlands and Climate Change Expert Group database should be open to the whole commission. Since that time, no requests have been received from the IPS for specific information, although the Facilitator contributed to the recent Peat Dialogue initiative. It is hoped that the expert group will become more active in 2018 and seek to directly engage with its members to ascertain potential points of mutual interest (e.g., meetings, workshops, symposia and publications).

Research into peatlands and climate change continues to remain at a very high level, although annual publications in this field may have dropped for the first time since 1940 (note: the results are from a Google Scholar search of the scientific literature, which was carried out before the end of the 2017 calendar year).

Similarly, research into rewetted/restored peatlands and climate change has increased steadily over the last decade, reflecting the increased funding directed at this important climate change mitigation topic and reinforcing the importance of cross-cutting issues within this commission.

## Expert Group on the Restoration of Peatlands

The report is in progress.



# Peatlands and Society

Chair: Mrs Marie Kofod-Hansen  
Sättrabyvägen 4  
S-762 97 Edsbro  
SWEDEN  
phone: + 46 708 931 861  
e-mail: marie.kofodhansen@gmail.com

1st Vice Chair:  
Kirsin Laurén, kirsi.lauren@uef.fi

2nd Vice Chair:  
Rachel Carmenta, rachelcarmenta@gmail.com

Peatlands Education, Communication and Publicity:  
Catherine O'Connell, bogs@ipcc.ie

Peatland Conventions and International Affairs:  
Jack Rieley, jack.rieley@btinternet.com

Peatlands and Culture:  
Anne-Jelle Schlistra, secretaris@veengenootschap.nl

Peatlands and People:  
Dian Novarina, dian\_novarina@aprilasia.com

The new structure of the SAB, with three commissions instead of nine, is now up and running. 2017 has been an interesting year!

## Some Words from the Chair and Vice Chairs

### Chairman Marie Kofod-Hansen:

We need a balanced understanding of the trade-offs between economic activity, the environment and social interests as population numbers climb, nations become more affluent and consumption rises. These dynamics are also salient in respect to the impact that local and international drivers of change have on peatlands globally, and particularly in the tropics. Transformations in peatland landscapes impact global environmental change and local ecologies, realize economic burdens as well as benefits, and influence local livelihoods, well-being, health and culture.

The Commission on Peatlands and Society makes an important contribution to the IPS by addressing the human and governance dimensions of peatland management and change. The commission will serve to improve our understanding of the livelihood implications of peatland change, including through socio-economic analysis, understanding impacts on well-being and health, and intrinsic and relational values to peatland landscapes.

The commission serves as a platform for cooperation and communication among the scientific community in working with the social aspects of peat and peatlands. The purpose and goal are to further enhance interdisciplinary understandings of the socio-ecological system that peatlands

represent and improve communication to diverse audiences about the values of peatlands and the impacts of their transformation. The work by the commission will add value to the goals of the IPS' strategy but also support the goals of the UN Sustainable Development agenda more broadly.

### First Vice Chair Dr Kirsi Laurén:

My field of research is cultural studies (folklore research). I submitted my doctoral thesis in 2006, which was concerned with mire/peatland experiences and narratives, and the human-nature relationship.

On our commission, my aim is to try to further highlight the research perspective concerning cultural and social aspects of mires and peatlands. It is important to bring together all the people who are interested in peatlands and society and strengthen our research activities. To succeed in this, we need more researchers from different fields of human and social sciences to join our commission and encourage them to present their studies and create new research plans. Important research topics in these fields include:

- The role of culture in the sustainable use of peatlands
- Indigenous people and peatlands
- Socio-ecological and socio-economic aspects of peatlands
- Peatlands, health and well-being
- The human influence on the history and future of peatlands

### Second Vice Chair Dr Rachel Carmenta:

My aim is to improve the knowledge base related to the human dimensions of peatland governance and policy performance with an understanding of the situated socio-political context.

My research adopts an interdisciplinary approach to understanding human-environment interactions and policy performance towards sustainable resource management. I aim to contribute to the research agenda on tropical peat and fire management practices by investigating which socio-political processes, understandings and value systems result in policy performance that we can observe today. I am conducting research that examines local socio-political factors that determine resource management behaviour and how these relate to sustainable land use practices in peatland systems.

From a peatlands and society perspective grounded in the tropics, I believe the most important issues in the field to be:

- Health impacts and, importantly, local understandings of health impacts of smoke from peat fires
- Policy options, barriers and evaluation
- Land tenure and a better understanding of land transactions involving peat
- National, regional, local perceptions of the importance of peat
- Aspirations and options for sustainable livelihoods on peat



## Convention in Aberdeen

At the Convention in Aberdeen in May 2017, the Commission on Peatlands and Society actively participated with seminars, for example, on the importance of governance at the international convention level from Jack Rieley and Susan Page, and identifying governance/institutions in tropical peatlands that perform with socially equitable and environmental outputs from Rachel Carmenta. We also had a number of presentations on cultural issues, including Marjatta 'Papu' Pirtola's introduction to felting techniques at a felting workshop.

In Aberdeen, the first steps of the 'Peat for Food' research project were taken in collaboration with the Commission on Peatlands and Economics.

Anne Jelle Schilstra presented on the Wikippeat project. The aim is to improve knowledge about peat and peatlands via Wikipedia. Much is available, but serious gaps remain. We have the knowledge to advance the IPS' mission: 'To serve all those involved in peatlands and peat through the communication of knowledge by means of projects which address key issues!' The project is ongoing and national committees will soon be involved.

## Peatlands, Education, Communication and Publicity

Catherine O'Connell has investigated how the national committees are communicating: how the websites are designed, what kind of information you can find on them, and if they have logotypes. Catherine has also investigated the main arrangements made by the different national committees, such as annual assemblies and conferences.

One main issue is to see whether the national committees are connected to Facebook. There are very few connected to Facebook at the moment. Next steps could include discussing some kind of common/standard approach of representing the IPS on national committees' websites.

## Cultural Events in Finland

In Finland, several artists (dancers, actresses, musicians) organized some public events on mires. The events were designed to promote the protection of Finnish mires and peatlands by means of art. See, for example, Suolaulu (in English: Mire Song): <https://mesenaatti.me/en/campaign/?id=353#single/view>.

## Road Map for 2018

- Defining the scopes of our expert groups: produce a questionnaire to find out what representatives on our national committees believe are the key issues of our these groups.
- Produce briefing notes or fact sheets about the expert groups and facts connected to relevant issues on the commission.
- Contribute to one pillar of the 'Jakarta Declaration on Responsible Management of Tropical Peatland' (as made by the IPS, the BRG and the JPS in Jakarta on 2 November 2017) by organizing a 'model project' for responsible management of tropical peatland.
- Set up a working group around conventions.
- Investigate the possibilities of holding a writing and photo competition based on peatlands.
- Update the list of peat museums in the world.
- And make contact with more experts and start working together for the benefit of the IPS!



The role of peat and peatlands for food production is one of the major topics of the future.

# National Committees

## Canada

Dr. Jean-Yves Daigle  
Canadian Society for Peat and Peatlands  
196 15 ième Rue  
Shippagan, NB E8S 1E8  
CANADA  
e-mail: jydaigle@nb.sympatico.ca

Secretary:  
Paul Short  
Canadian Sphagnum Peat Moss Association  
13 Mission Avenue Suite 2208  
St. Albert, AB T8N 1H6  
CANADA  
phone: +1 780 460 8280  
e-mail: cspma@peatmoss.com  
web: www.peatmoss.com

### Environmental Stewardship

The Natural Sciences and Engineering Research Council of Canada (NSERC), Industrial Research Chair in Peatland Management and Collaborative Research & Development Grant (CRD) continued. It will be entering its final year. Negotiations have begun on a renewal for a 5-year CRD grant.

Negotiations were held with McGill University to apply for a new NSERC 5-year grant. The research will investigate greenhouse gas emissions from peat extraction and use and after use.

A new chapter on Donor site management was prepared for inclusion in the Restoration Guide.

### Social Stewardship

An updated social and environmental assessment (Social Balance Sheet) was completed. A revised Environmental Life Cycle Analysis (eLCA) was initiated, the documentation will be available in 2018.

An Economic impact assessment of the horticultural peat industry to Canada was initiated.

### Communications

An industry harvest report was completed in September and a press release distributed.

In New Brunswick, the industry is almost at or slightly above its expected harvest volumes (New Brunswick North, 104%, New Brunswick South, 98%). The harvest on Québec's South Shore (90%) is below expectations. A cool moist spring and parts of the summer account for the shortfall. In Québec's

North Shore (98%) the results are more favorable with some producers achieving and exceeding their harvest expectations.

The Prairie Provinces (MB, SK & AB), have experienced a mixed harvest season (Manitoba, 110%; Saskatchewan, 78%; Alberta, 78%). A prolonged spring and cool wet summer months account for the poorer showing in Saskatchewan and Alberta. Minnesota has experienced a similarly lower than expected harvest with only 53% achieved.

The industry participated in the International Symposium on Growing Media, Soilless Cultivation and Compost Utilization in Horticulture, Portland Oregon, USA.

### Resource Governance

#### Federal Government

Engagement on RAMSAR resolutions and upcoming (2018) COP were the focus with the Federal Government.

The industry worked with the Department of Foreign Affairs and International Trade, and the Canadian Food Inspection Agency (CFIA) to investigate the issues regarding pest risk assessment for peat and peat-based products.

#### Provincial Governments

Meetings continued with the Alberta and Manitoba government through the respective industry Task Forces and Working Groups. The province of Saskatchewan has initiated discussions on increased peatland management and resource development.

In Manitoba, there have been some delays in advancing elements of the new peatland resource Act and Regulations. The Peatland Management guidelines for exploration, lease applications, management and recovery plans were approved. A guidebook is available through the Government of Manitoba.

In the province of Quebec, the APTHQ continues to be engaged with the Government of Quebec to develop new regulations related to the environment act and the climate change regulations.





# Finland

## Chair

Tapio Lindholm (2018), Raija Laiho (2017)  
Finnish Environment Institute (SYKE)  
Natural Environment Centre/Biodiversity  
P.O. Box 140  
FI-00251 Helsinki  
FINLAND  
e-mail: tapio.lindholm@ymparisto.fi  
phone: +358 295 251 379  
web: www.suoseura.fi

## Secretary

Jaana Leppälampi-Kujansuu (2018), Tuula Larmola (2017)  
University of Helsinki  
e-mail: suoseura49@gmail.com

## Industry

Hannu Salo  
Finnish Bioenergy Association  
hannu.salo@bioenergia.fi

2017 marked the 68th anniversary of the Finnish Peatland Society. The regular main activities, seminars and excursion were topped with celebrations of the 100-year-old Finland. Two seminars on this theme were organized: one alongside the spring meeting and the other alongside the autumn meeting.

The Annual Convention and Seminar of the IPS (Aberdeen, 28-31 May) was attended by the President of Suoseura, Tapio Lindholm. Planning and organizing the second Peatland Day (held on 2 February 2018) preoccupied the society, especially in the latter half of the year. Additionally, Board members participated actively in the activities of the IPS, while the 68th volume of the journal *Suo - Mires and Peat* was published.

## Meetings and Seminars

The spring meeting and seminar were organized for 24 March and the autumn meeting and seminar took place on 21 November at the House of Science and Letters in Helsinki. The topic of both seminars was 'Peatlands in the 100-year-old Finland - What Has Our Independence Meant to Peatlands?'

In the seminars, many interesting presentations were given, including on forest improvement in independent Finland (Juhani Päivänen), Finnish mire and peatland culture - from woodcraft to media images (Kirsi Laurén), new usages of peatland plants (Marika Laurila), conservation of peatlands as a patriotic task - the history of peatland conservation (Tapio Lindholm), how to respond to international goals for protecting mire ecosystems - a case study of ELITE (Tuomas Haapalehto), Parks & Wildlife restoration of peatlands (Sakari Rehell), the development of peat and peatland research in Finland over the last 100 years (Kimmo Virtanen), peatland cultivation before, now and in the future (Merja Myllys), the development of peat production technology (Ari Erkkilä) and new possibilities for peat products (Janne Kangas).

## Excursion

In celebration of the 100th anniversary of Finland's independence, the 40th National Park of Finland was established in Hossa, which is where the excursion headed on 16-17 August. The excursion consisted of 14 participants and two guides. During the trip, the local guides led the group through the park and its peaty surroundings. A detailed travel diary was published in *Suo* 68 (75:82).

# Germany

## Chair

Dr. Andreas Bauerochse  
Deutsche Gesellschaft für Moor- und Torfkunde e.V.  
Stilleweg 2  
D-30655 Hannover  
GERMANY  
phone: +49 152 / 31 89 82 84  
e-mail: bauerochse@dgmtev.de  
web: www.dgmtev.de

## Secretary

Jörn Kasch  
Deutsche Gesellschaft für Moor- und Torfkunde e.V.  
Stilleweg 2  
D-30655 Hannover  
GERMANY  
e-mail: kasch@dgmtev.de

## Industry

Arne B. Hückstädt  
Industrieverband Garten e.V. (IVG)  
Wiesenstraße 21 a1  
D-40549 Düsseldorf  
GERMANY  
e-mail: hueckstaedt@ivg.org

## Meetings and Seminars

An expert workshop entitled 'Definition and Classification of Peat Soils' took place in cooperation with the German Soil Science Society (DBG) in Hanover on 7 March 2017.

The 16th Seminar on Peatlands and Peat organized by Deutsche Gesellschaft für Moor- und Torfkunde e.V. (DGMT), i.e., the German Peat Society, was held in Zeven, Lower Saxony, on 12-13 May 2017. This annual seminar adopted the character of a training course, in which laypeople, employees from the peat industry and students were introduced to peat and peatland science.

Again in 2107, the Alfred Toepfer Academy for Nature Conservation (NNA) of Lower Saxony, together with the DGMT, organized the Annual Expert Seminar 'Conservation of Peatlands in Lower Saxony – An Exchange of Experiences' in Schneverdingen on 17-18 May 2017.

Operational aspects of nature conservation for tourism and environmental education in peatlands were explored at an interdisciplinary workshop in Kloster Drübeck (Nationalpark

Harz) on 22-23 May 2017. Discussions during the workshop centred on how peatland conservation, tourism and environmental education can benefit from each other.

The Annual Assembly and excursions of the DGMT took place in the Hunsrück Mountains on 20-23 September 2017. Seventy-six members took part and listened to 17 oral and six poster presentations covering local peatlands, rewetting and revitalization of sloping mires, agriculturally used peatlands, peat moss cultivation, greenhouse gases, peat decomposition, pollen analytics, climate change and climate protection. The highlights of the two excursions were interesting stops in the Hunsrück Nationalpark and in the West-Eifel, where different types of peatlands are presented.

After 16 years as Chair of the DGMT, Dr Gerfried Caspers chose not to run for another term. His successor is Dr Andreas Bauerochse. A report about the Annual Assembly can be read in TELMA 47, 2017.

Experiences in the rewetting of bogs in the Eider-Treene-Sorge Lowland were exchanged in Friedrichstadt/Schleswig-Holstein on 12-14 October 2017. The Foundation for Nature Protection and the State Office for Agriculture, Environment and Rural Areas (LLUR) Schleswig-Holstein organized this meeting in cooperation with the DGMT.

A sphagnum moss identification course was organized by the DGMT at MoorInformationsZentrum in Ahlenmoor, Lower Saxony, on 9-12 November 2017.

Meetings and Seminars involving DGMT Members:

- An expert talk entitled 'Water Management and Mire Conservation' was organized by the Greifswald Mire Centre and the DGMT in Schüberg/Hamburg on 6-7 June 2017.
- German Grassland Day (Deutscher Grünlandtag) on 22-23 September in Stemshorn/Dümmer.
- Paludiculture: a national conference entitled 'Klimaschutz und Moornutzung: Potentiale in Deutschland' on 25 September.
- Second International Conference on the Utilization of Wetland Plants RRR2017: Renewable Resources from Wet and Rewetted Peatlands on 26-28 September 2017 in Greifswald/Germany.
- Third International Sphagnum Farming Workshop on 29-30 September in North-west Germany.
- Workshop by the German Landscape Conservation Group (Deutscher Verband für Landschaftspflege e.V. (DVL)) entitled 'Consultation and Coaching in Mire Conservation' on 21 November in Berlin.
- 5. Ausseer Naturraumgespräche: 'Between Soil and Water – Ecosystem Mire' on 24-25 October 2017 in Bad Mitterndorf/Austria.
- 52nd German Peat and Humus Day on 23 November 2017 in Bad Zwischenahn.
- International Conference on Climate Smart Agriculture on Organic Soils (CAOS) on 23-24 November 2017 in Uppsala/Sweden.

## Publications

TELMA 47 - the DGMT's yearly published journal with articles and reports relating to peat, mire and peatlands.

All activities and publications of the DGMT can be found at [www.dgmtev.de](http://www.dgmtev.de). The website is also available in an English version.

## Ireland

Chair

Dr. Catherine O'Connell  
Irish Peat Society  
Irish Peatland Conservation Council  
Bog of Allen Nature Centre  
Lullymore, Rathangan  
Co. Kildare  
IRELAND  
e-mail: [bogs@ipcc.ie](mailto:bogs@ipcc.ie)

Secretary

Mr. Pat Fitzgerald  
Bord na Móna p.l.c.  
Main Street  
Newbridge, Co. Kildare  
IRELAND  
e-mail: [pat.fitzgerald@bnm.ie](mailto:pat.fitzgerald@bnm.ie)  
web: [www.bnm.ie](http://www.bnm.ie)

The Irish Peatland Society ran a very successful two day field trip and conference on the theme of People and Nature: enjoying the Land or Impacting the Environment? The meeting took place on the 17th and 18th of October and included a field trip to a selection of sites in the Wicklow Mountains located on the east coast of Ireland close to the capital of Dublin that are being impacted by visitors. These included: Glenmalur where the group where shown how issues of access across private farmland to Lugnaquilla Mountain were resolved through the provision of an agreed access route which is maintained by the local farmer; Wicklow Way Walking Trail to see the site of an accident and to hear about a compensation court case taken by a walker involved in the accident against the state; Glenmacnass Waterfall where visitors impact on national park land as the area is unmanaged and Fancy Mountain/Luggala where visitors are trampling privately-owned blanket bog habitat as they climb the mountain. The trip was made possible thanks to the co-operation of Mountaineering Ireland and in particular Helen Lawless who designed the itinerary.

On the 18th October a conference was held and the Society heard talks by three experts on the theme of access. We learned that it is essential for those involved in providing access to peatland sites to ensure that they undertake regular monitoring and reporting on the condition of visitor facilities. This includes maintaining paperwork and diaries of actions taken that can be examined by authorities should an incident occur. Furthermore the Society were warned about the power of social media in attracting huge volumes of visitors to sensitive peatland habitat cannot be



under-estimated and the Society heard about the example of the “Stairway to Heaven” social media phenomenon in the Cuilcagh Mountains of Co. Fermanagh which brought thousands of visitors to the mountains and which has resulted in extensive damage and habitat loss in this Special Area of Conservation. Thanks to all the field guides and speakers who combined to make this one of the great Irish Peatland Society trips that will be remembered because it occurred in the aftermath of Storm “Ophelia” on a beautiful sunny day in the Wicklow Uplands. All praise to the Glenmalur Lodge Hotel who provided candlelit breakfast and dinner beside a comfy log fire despite the cuts in electricity. The whole experience was magical.

Members of the Irish Peatland Society attended the International Peatland Society Meeting in Aberdeen presenting posters and papers on a variety of topics relating to peatlands in Ireland. In addition the Irish Peatland Society developed a new logo which aims to reflect the fusion of interests of peatland conservation, management, development and culture in the society.

## Japan

Chair  
Mitsuru Osaki  
Japan Peatland Society  
Research Faculty of Agriculture, Hokkaido University  
Kita-9, Nishi-9, Kita-ku  
Sapporo 060-8589  
JAPAN  
phone: 011 706 2554  
e-mail: mosaki@chem.agr.hokudai.ac.jp

### Board Members

Mitsuru Osaki (President), Shigeo Kobayashi (Vice President), Takashi Hirano (Vice President), Hiroshi Hayasaka (Director general), Mitsuhiko Kamiya (Account general), Akira Haraguchi, Mamoru Kanzaki, Takashi Kohyama, Osamu Kozan, Takashi Inoue, Kohsuke Mizuno (Auditor), Noriyuki Kobayashi (Auditor)  
Office staffs: Hidenori Takahashi, Yohei Hamada

### Annual Meeting

Date: 17-18 June 2017  
Location: Amami Culture Center, Amami City, Kagoshima Prefecture, Japan  
Collaborating academic societies: Japan Society of Tropical Ecology (host), Japan Society for Southeast Asian Studies, Japan Association for African Studies, Japanese Coral Reef Society, Japanese Society for Thai Studies, Japanese Society for Tropical Agriculture, Japan Society for Mangroves, Japan Society of Island Studies

### General Assembly

Date: 16 June 2017  
Location: Naze Community Center of Amami City  
Agenda: Business and Accounting Reports for FY2017,

Business Plan and Budget for FY 2018.  
Report: 1. Collaboration with the BRG, Republic of Indonesia;  
2. Collaboration with International Peatland Society

### Co-organized Meetings

1. Meetings between the BRG, the IPS and the JPS on peatland restoration in Indonesia  
Date: 31 May 2017  
Location: Marriott Hotel, Dyce, Aberdeen, Scotland
2. First Tropical Peatland Roundtable: Establishing Responsible Management of Tropical Peatland –jointly organized by the IPS, the BRG and the JPS. Tropical Peatland Roundtable released ‘Jakarta Declaration’ with five pillars:
  - Establish a ‘tropical peatland centre’
  - Organize an ‘international committee for technical consultation’
  - Develop an ‘integrated monitoring system’
  - Organize a ‘model project’ for responsible management
  - Achieve capacity building

The ‘Jakarta Declaration’ has become one of indicators for establishing an international tropical peatland centre (tentative) in Indonesia, which will promote capacity building at a domestic and foreign level.

### Meetings

Date: 1-2 November 2017  
Location: Menara Peninsula Hotel, Jakarta, Indonesia  
Field trip: In collaboration with Palangkaraya University  
Date: 3-5 November 2017  
Location: Palangkaraya, Central Kalimantan, Indonesia

### Presented Papers

1. Reducing Greenhouse Gas Emission from Forest/Peatland by the Green Economy in Indonesia  
Date: 10 April 2017  
Location: Ito International Research Center, University of Tokyo  
Organizer: JICA  
Guest speakers: Dr Siti Nurbaya (Minister of Environment and Forestry, Indonesia) and Mr Nazir Foad (Head of the BRG, Indonesia)  
Report on the activities in Indonesia: Made by JICA, and the university (Professor Mitsuru Osaki) and private sectors
2. Peatland Convention 2017: Responsible Management of Peatlands  
Date: 28-31 May 2017  
Organizer: IPS and UK Peat Society  
Location: Marriott Hotel, Dyce, Aberdeen, Scotland  
Presentations by JPS members: Mitsuru Osaki, Kohsuke Mizuno, Hidenori Takahashi etc.
3. UNFCCC COP23 Japan Pavilion, Japan Event Side: Real-time Ground Water Table Monitoring at Tropical Peatlands – Experience from Indonesia  
Date: 11 November 2017  
Organizer: JICA



Meeting the Mayors of Palangka Raya was a great honour for the IPS guests, including Mitsuru Osaki.

Location: Japan Pavilion in Bonn Zone, COP23, Bonn, Germany  
Presentations by JPS members: Mitsuru Osaki and Hidenori Takahashi

4. Seminar on hydrology and peat management in Central Kalimantan  
Date: 12 February 2018  
Organizer: IJ-REDD Project  
Location: Management Office of Sebangau National Park, Palangka Raya, Indonesia  
Lecturing by JPS members: Professor Sawahiko Shimada and Dr Hidenori Takahashi

## Latvia

Chair  
Ingrida Krigere  
Latvian Peat Association  
Ernestines Str 24  
Riga, LV-1046  
LATVIA  
phone: + 371 291 06008  
e-mail: ingrida@peat.lv  
web: www.peat.lv

In 2018, the association continued its work on the Future Strategy for the Sustainable Use of Peat for 2018-2030. Using the information provided by the association, the official strategy project has been initiated in accordance with Latvian regulatory enactments and in coordination

with ministries and non-governmental organizations. The strategy is led by the Ministry of Environmental Protection and Regional Development. By the adoption of the strategy, the industry will have a clear development perspective and receive future investments.

Given the active work of the association, the Parliament of the Republic of Latvia adopted amendments to the Law on Subterranean Depths at the end of 2017 (the law sets out requirements for the use of peat and other mineral resources). The amendments will ensure stability for peat extraction companies, which lease land from the state or local governments (public land) for the extraction of peat. In Latvia, two thirds of the peat extraction areas are public land. With the introduction of amendments, the duration of the license for the extraction of peat and the duration of the lease can be set up to 75 years; in practice, this means until the end of the resource extraction. To date, the maximum terms of the license and lease were both 25 years. With the introduction of the new regulation, we will also ensure the conscious management of resources and the possibility for entrepreneurs to plan activities from the beginning of extraction to the end of recultivating the extracted areas. The association continues its cooperation with the appropriate ministries by submitting its proposals for the improvement of regulatory enactments relevant to the industry.

The association continues to be a partner of LIFE Restore project, which began on 1 September 2015 and will run until 31 August 2019. The main objective of the project is to develop recommendations for the sustainable management of degraded peatlands in Latvia. One of the project



activities is based on the sample analysis of greenhouse gas emissions collected during field measurements to appraise a methodology for the accounting of these emissions, as developed by climate experts from the UN. The measurements of greenhouse gas emissions taken in 2017 show that the actual greenhouse gas emissions from peatlands in Latvia are significantly lower, by up to two times, than the internationally determined emission factors used in the Latvian GHG inventory reports.

The Baltic Peat Producers Forum was held in Latvia, Riga, from 13 to 14 September 2017. The forum is organized on a rotational basis by the Estonian, Latvian and Lithuanian Peat Associations. This year, it was the turn of the Latvian Peat Association and the topic was 'Peatlands - Research, Production, Recultivation and the Factors Influencing It'. The forum was attended by 306 participants from 16 countries, alongside 15 mini expo participants.

At its own expense, the association organized a workshop and practical demonstration on peat bog research for the employees of the Ministry of Environmental Protection and Regional Development, the State Environmental Service and the Latvian Environment, Geology and Meteorology Centre (a public limited company). State institutions expressed great interest and 40 employees participated in the training. Participants gave highly positive feedback about the event and suggested that such practical training should be continued.

2017 was unfavourable for peat extraction. In August, rainfall was 20% above the norm and, in September, it was 68% above the norm. The rainfall was particularly heavy in East Latvia, where the amount of rainfall increased sharply in the middle of June, with flooding at the end of the summer. The summer was unusually cool and the number of sunny days was low. Official figures for peat extraction in 2017 are not yet available; but, according to the association's estimates, the harvest in 2017 was 851,600 tonnes.

## Malaysia

Chair

Dr. Lulie Melling  
Sarawak Tropical Peat Research Institute  
Chief Minister's Department  
Lot 6035, Kuching-Kota Samarahan Expressway  
94300, Kota Samarahan, Sarawak  
MALAYSIA  
e-mail: luliemelling@gmail.com

Secretary

Frederick Haili Teck  
No. 386A, Lorong 7  
Jalan Semaba  
93250 Kuching, Sarawak  
MALAYSIA  
phone: 016-8896156  
e-mail: fhteck@gmail.com

The Malaysian Peat Society (MPS) plays a crucial role

in promoting the wise and sustainable use of peat and peatlands in the country. A number of significant activities of MPS were successfully undertaken in 2017.

The 19th Management Committee Meeting was held on 7 January 2017 to discuss the activities and programmes of the MPS for that year. The meeting decided to produce a handbook on tropical peatlands as a source of information for the general public; this is currently in the process of being reviewed and refined. Additionally, technical training and some financial assistance have been provided to students interested in enhancing their technical knowledge and skills in tropical peat research.

A new MPS Management Committee was elected for the term 2017-2019 during the Seventh Annual General Meeting on 13 May 2017. The newly elected office holders are:

President:	Dr. Lulie Melling
Vice President:	Siaw Ting Chuan
Secretary-General	Frederick Haili Teck
Vice Secretary-General	Priscilla Esther Mikin
Treasurer-General	Dr. Sharon Lau
Vice Treasurer-General	Jee Hon Chong

### Committee Members

1. Mohd. Zulhilmy
2. Frazer Midot
3. Auldry Chaddy
4. Bobbie Yamoh
5. Annie Ting

In order to learn about the latest national and international updates on peat and peatland research, some MPS members participated in the Annual Convention of the IPS in Aberdeen, Scotland, from 28 to 31 May 2017. MPS members also actively participated in the Incorporated Society of Planters event entitled '100 Years of Oil Palm: Surging Forward' during the 13th NATSEM, held in Selangor, Malaysia, between 17 and 19 July 2017, which aimed to provide planters with information on the management practices of oil palm cultivation.

In addition, MPS members gave both oral and poster presentations on carbon and water fluxes from different tropical peat ecosystems at the AsiaFlux Joint Conference Workshop 2017 and the 15th Anniversary Celebration of ChinaFLUX, which was held in Beijing, China, on 16-19 August 2017.

Another memorable event was the Christmas/New Year Dinner Gathering organized by the Sarawak Tropical Peat Research Institute, in collaboration with the MPS, on 6 January 2018, which aimed to build rapport among members and attendees so that they felt 'in sync' with one another.

# United Kingdom

Acting Chair  
Susan E. Page  
University of Leicester  
Department of Geography  
University Road  
Leicester LE1 7RH  
UNITED KINGDOM  
e-mail: sep5@le.ac.uk  
phone: +44 116 2523318 / +44 116 2522522

Secretary  
Prof. Jack Rieley  
1 Closes Side Lane  
East Bridgford  
Nottingham NG13 8NA  
UNITED KINGDOM  
phone: +44 1949 20920  
e-mail: jack.rieley@peatlands.org

As usual 2017 was a very busy year for peatlands and peat people in the UK. The increased attention being given to peatlands globally by national and regional governments, international conventions and international NGOs highlights their importance as carbon stores and mitigators of climate change processes. UK members of the IPS have been involved in many ways, contributing to the science of peatlands and their restoration.

Our UK IPS membership numbers continue to remain stable at around 40 with the few resignations being balanced by new applications for membership, mostly owing to student membership turnover. Please continue to try to convince colleagues and students of the advantage of IPS membership and the services the Society provides.

Most of the UK Peatland Society's efforts in 2017 were focussed on the IPS Convention in Aberdeen.

## Allan Robertson Grants

Once again, the UK Peatland Society was a driving force in raising money for the Allan Robertson Grants for young peatland researcher and managers. Allan's family supports these financially, together with the IPS Executive Board and independent donations. In 2015, their first year, we awarded 5 grants but in 2016 owing to people's generosity we were able to provide 15 awards to young scientists and professionals who attended the Kuching Congress.

In 2017 8 grants were given to a wide range of young peatland researchers in conjunction with the Aberdeen Convention. At the Convention Gala dinner held in Haddo House, Aberdeenshire we raised a magnificent €1000 (£865) from the participants at a fund raiser that was matched by generous contributions of another €1000 from several individuals. This is a great start for the 2018 Allan Robertson Grants.

## IPS Convention, Aberdeen

The IPS Convention in 2017 was held in the Marriott Hotel Dyce, Aberdeen from 28-31 May, organised by the UK Peatland Society. The event that was entitled "Responsible Management of Peatlands" embraced the most recent scientific research, technical developments and practical activities on agriculture and forestry on peatland, responsible peat production and peatland restoration.

The Convention consisted of a 'Brainstorming' session on key peatland issues, a 'Symposium with four Workshops' on the importance and effects of different land uses on peatlands in different regions of the world and a special session on 'Restoration of Tropical Peatland' followed by 'Focus Groups Action Planning'.

The Convention offered an excellent opportunity for scientists, policy makers, regulators and peatland and industry managers to meet, share and discuss current and emerging knowledge and experience on all aspects of peat and peatlands. The meeting presented the most recent scientific research, technical developments and practical activities related to agriculture and forestry on peatland, and responsible peat production. It also considered best practices for peatland after use including rewetting and revegetating to reinstate peat formation and provide economic and leisure possibilities.

155 Participants from 18 countries registered for the Convention. Of these 125 booked for the full four days while the rest attended on a daily basis. At the opening event on Monday 29th May we were honoured to have seven members of the Indonesian Parliament (Senators) in attendance.

## Convention Programme

### Sunday 28th May

The Convention commenced after lunch on Sunday 28th May with a 'Brainstorming' session on current and emerging issues relevant to the three new IPS Commissions - Peatlands and Environment, Peatlands and Economy and Peatlands and Society.

The Brainstorming started in a plenary session introduced by IPS 2nd Vice President Samu Valpola who explained the rationale behind recent organisational changes and invited participants to join in one of the Commission Expert Groups. This was followed by a status report on various IPS projects.

Following the plenary participants opted to join one of the three concurrent sessions - Economy, Environment and Economy all of which were well attended.

### Monday 29th May

#### Opening

Brief speeches of welcome were given by Professor Susan Page, Convention Chair, Professor Jack Rieley, Chair of the Convention Organising Team, Gerald Schmilewski, IPS



President and Professor Bjorn Hånell, Vice Chairman of IUFRO and past President of IPS. Susan Page read a message from Professor Juhani Päivänen, Honorary President of IPS who was unable to attend. The Convention was formally opened by the Lord Provost of Aberdeen, Barney Crockett. The opening was followed by five keynote presentations given by experts in a wide range of peatland expertise from different countries. These keynotes were related to the themes of the four workshops that commenced in the afternoon and the session on Restoration of Tropical Peatland that took place on Wednesday 31st May.

### *Workshops*

The Convention Symposium consisted of four concurrent Workshops each dealing with a major aspect of drained peatlands, followed by questions, answers and interactive participant involvement with special sessions on restoration of tropical peatland, peatland surveying and monitoring and Sphagnum farming.

#### **Workshop A: Carbon management & monitoring**

Facilitator: Dr Catherine O'Connell;

Rapporteur: Dr David Wilson

This was a constructive and informative session with a range of talks that covered

- Carbon balances of several peatland land uses (e.g. arable, peat extraction and restoration)
- Peatland management and monitoring

#### **Workshop B: Forestry**

Facilitators: Sakari Sarkkola and Bjorn Hånell;

Rapporteur: Russell Anderson

Peatland forestry is a business, carried out on organic soils, where lowering of the water table by drainage is a prerequisite. Forestry has been practiced for hundreds of years and only in Europe can we today find more than 10 M ha of peat-covered land drained for forestry purposes.

#### **Workshop C: Responsible Peat Production**

Facilitator: Jaakko Silvola; Rapporteur: Donal Clarke

This session covered a wide variety of uses of peatlands and dealt with how these uses can be achieved responsibly considering their environmental, economic and social impacts. The uses of peatlands that were considered in the presentations included, production of peat for energy, use of peat in the horticulture industry, development of integrated aquaculture and biomass production using duckweed, use of peat in the production of whisky, and peat moss cultivation ("sphagnum farming") and sphagnum harvesting from peatlands drained for forestry.

#### **Workshop D: Peatland Restoration and After Use**

Facilitator: Roxane Andersen; Rapporteur: Mark McCorry

This session covered a wide range of topics, including restoration techniques, monitoring of water chemistry and greenhouse gases, site specific studies and the role of peatland restoration for conservation in Ireland. The discussion that followed highlighted several key points.

### *Social Programme*

Several fantastic social events accompanied the scientific and technical programme of the Convention. This provided opportunity to meet old friends and make new ones.

#### **Tuesday 30th May**

##### *Excursions*

There was a choice of four different excursions on Tuesday 30th May to places of peatland, nature conservation, landscape, stately home and malt whisky interest. Each of these provided the opportunity to view the beautiful northern Scottish landscape and learn something of its history.

##### *Gala Dinner*

This was the highlight of the Convention. It was held on the evening of Tuesday 30th May in Haddo House, a stately home, located approximately 20 miles north of Aberdeen. The evening commenced with a piper welcoming the guests to a cocktail reception in the main house by kind invitation of the Chairman of the National Trust for Scotland Sir Moir Lockhead. Lord and Lady Aberdeen greeted the guests. Dinner was held in the banqueting suite with Scottish Music and dancers to entertain during the meal and a Scottish Ceilidh of dance, music and song for all to join in afterwards.

#### **Wednesday 31st May**

The final day of the Convention started with a special session on 'Restoration of Tropical Peatlands'. This was followed by a plenary feedback from the four concurrent workshops that took place on Monday 29th May at which the four rapporteurs gave their reports which were followed by a general discussion and recommendations for future action.

The IPS Round Table of National Committees and the 2017 Annual Assembly took place after lunch. For those not involved in these business meetings there were additional side event meetings on Peatland Survey and Monitoring, Sphagnum farming and Round Table on Tropical Peatland.

##### *Special Session on Tropical Peatlands and their Restoration*

The Convention was privileged to have as participants several members of the Indonesia Peatland Restoration Agency (BRG), especially its Head Nazir Foad. This session highlighted the commitment of the Government of the Republic of Indonesia to protect remaining areas of natural peatland and restore 2 million hectares that has been degraded because of drainage, land conversion and fire.

##### *Special meeting on peatland surveying and monitoring*

This was organised by Andrew Sowter of Geomatic Ventures. The meeting discussed the results of a new satellite technique that is capable of measuring ground subsidence rates to millimetres precisions over peatland surfaces. An overview of the method was presented, and two sets of results were discussed: one covering the complete area

of mainland Scotland and another from an area of Johor, Malaysia.

### *Special meeting on Sphagnum farming*

This was a preparation meeting for the IPS Network project "Peat Moss Cultivation and Harvesting for Horticulture and Restoration (CultivMoss). About 15 people participated in the meeting, the main objective of which was to discuss the aims and challenges. Some general decisions and future actions were decided.

### **Tribute to members of the Convention Organising Team**

The IPS Aberdeen Convention 2017 would not have been a success without the dedication and hard work of members of the small organizing team who met on several occasions before the Convention in Dundee and Aberdeen to plan and organize the meeting. They gave their time freely and without question. I am indebted to them:

- Olivia Bragg, University of Dundee
- Russell Anderson, Forest Research, Forestry Commission, Roslin
- Roxane Andersen, University of the Highlands and Islands, Thurso
- Steve Chapman, The Hutton Institute, Aberdeen
- Neil Godsmann, Northern Peat and Moss Company, Peterhead

### **Tribute to Sponsors of the Convention**

Thanks, is expressed to the many corporate, institutional and business sponsors who provided money, goods and services and made the event not only possible but very successful.

## United States of America

Chair

Mr. Donald N. Grubich  
10105 White City Road  
Britt, MN 55710  
USA  
phone: +1 218 741 2813  
e-mail: dngrubich@gmail.com

Secretary

Dr. Thomas J. Malterer  
2201 Vermilion Road  
Duluth MN 55803  
USA  
e-mail: tmalter2@d.umn.edu

The U.S. National Committee (USNC) met several times during 2017. Three goals were addressed during the year. The first goal: to continue to work with the U.S. Geological Survey (USGS). The USGS has nationwide responsibility for collecting and publishing yearly data on peat production and use. They are dependent on a voluntary reporting system by peat producers. The USNC has given the USGS contact information for companies and encouraged peat producers

to report their production. We have also reviewed yearly estimates with local resource managers.

The second goal: to maintain (refresh) contacts with state and federal agencies that regulate horticultural peat harvesting and the preservation of peatlands. The ever changing personnel in these agencies require personal contact so IPS perspectives can be presented and weighed as part of regulatory decision-making. Seven agencies were contacted. Under the current federal Trump Administration, the regulatory environment is being drastically reduced and it is in a high state of flux. Under this uncertainty, the USNC remains active in communicating with regulatory agencies acting in an educational capacity by providing agencies with reference publications and through discussions of peatlands during site visits.

The third goal: to increase IPS membership in the U.S.A. IPS membership remains low among peatland experts and companies. Promotional efforts were directed at contacting current and past individual members and attracting new members that belong to scientific organizations (e.g. Society of Wetland Scientists).

We emphasized the benefits of IPS membership in a local, state and world context. Results of our efforts are mixed. Some individuals and companies expressed interest in joining while others related that their interests were better served by other organizations.

## Other National Committees

### China

President  
Professor Wang Shengzong  
Institute for peat and mire research, NENU  
No.5268, Renmin street  
130024 Changchun, China  
e-mail: zwang@nenu.edu.cn

Secretary

Professor Meng Xianmin  
Institute of Peat and Mire Research,  
Northeast Normal University,  
No. 5268, Renmin Street,  
Changchun, 130024, China  
phone: 0-86-431-850 98072  
e-mail: mengxm3711@163.com

### Estonia

Secretary

Erki Niitlaan  
Estonian Peat Association  
Männiku tee 104  
EE-11216 Tallinn, Estonia  
phone: +372 668 1016  
mobile: +372 552 7327  
e-mail: info@turbaliit.ee  
web: www.turbaliit.ee



Assistant  
Margit Pulk  
e-mail: [margit@turbaliit.ee](mailto:margit@turbaliit.ee)  
mobile: +372 51 85 384  
phone: +372 66 81 011

## Indonesia

Prof. Supiandi Sabiham  
Indonesian Peat Association  
Bogor Agricultural University  
Wing 12 Level 5  
Jl. Meranti, Kampus Dramaga.  
Bogor 16680, Indonesia  
phone: +62 251 8629360  
e-mail: [ssupiandi@yahoo.com](mailto:ssupiandi@yahoo.com)

Secretary  
Prof. Fahmuddin Agus  
Indonesian Soil Research Institute  
Indonesian Center for Agricultural Land Resources Research  
and Development  
Jl. Tentara Pelajar No. 12  
Bogor 16114, Indonesia  
phone: +62 251 8336757  
e-mail: [fahmuddin\\_agus@yahoo.com](mailto:fahmuddin_agus@yahoo.com)

Prof. Budi Indra Setiawan  
Indonesian Peat Association  
Bogor Agricultural University  
Jl. Meranti, Kampus Dramaga  
Bogor 16680, Indonesia  
phone: +62 251 8629 360  
e-mail: [budindra@ipb.ac.id](mailto:budindra@ipb.ac.id)

## Lithuania

Giedrius Kavaliauskas  
IPS Lithuanian National Committee  
Kauno g. 17  
LT-53387 Ezerelis, Kauno rajonas, Lithuania  
phone: +370 375 34260  
e-mail: [giedrius.kavaliauskas@klasmann-deilmann.com](mailto:giedrius.kavaliauskas@klasmann-deilmann.com)

Secretariat  
Giedrius Giparas  
IPS Lithuanian National Committee  
Lithuanian Peat Producers Association  
A.Vienuolio g. 8  
01104 Vilnius, Lithuania  
e-mail: [giedrius.giparas@asocdurpes.lt](mailto:giedrius.giparas@asocdurpes.lt)  
web: [www.asocdurpes.lt](http://www.asocdurpes.lt)

Ugne Radziunaite  
IPS Lithuanian National Committee  
Lithuanian Peat Producers Association  
A.Vienuolio g. 8  
01104 Vilnius, Lithuania  
e-mail: [ugne.radziunaite@lpk.lt](mailto:ugne.radziunaite@lpk.lt)

## The Netherlands

Drs. A.H.P. van Berckel  
Nederlands Veengenootschap  
Intervema BV  
Burg. J.G. Legroweg 80  
9761 TD Eelde, the Netherlands  
THE NETHERLANDS  
phone: +31 50 3095950  
e-mail: [vanberckel@griendtsveen.de](mailto:vanberckel@griendtsveen.de)

Secretary  
Dr. A.J. Schilstra  
Nederlands Veengenootschap  
Hoofdstraat 152  
9355 TE Midwolde, the Netherlands  
phone: +31 594 513701  
e-mail: [secretaris@veengenootschap.nl](mailto:secretaris@veengenootschap.nl)  
web: [www.veengenootschap.nl](http://www.veengenootschap.nl)

## Poland

Prof. Dr. Lech Wojciech Szajdak  
Doctor Honoris Causa  
Polish Academy of Sciences  
Institute for Agricultural and Forest Environment  
ul. Bukowska 19  
PL-60-809 Poznan, Poland  
phone: +48 61 847 5601  
e-mail: [szajlech@man.poznan.pl](mailto:szajlech@man.poznan.pl), [lszajdak@tlen.pl](mailto:lszajdak@tlen.pl)

Secretary  
Dr. Katarzyna Styla  
Polish Academy of Sciences  
Institute for Agricultural and Forest Environment  
ul. Bukowska 19  
PL-60-809 Poznan, Poland  
e-mail: [styla.katarzyna@gmail.com](mailto:styla.katarzyna@gmail.com)

## Sweden

Mr. Torbjörn Claesson  
Neova AB  
Arenavägen 33  
121 77 Johanneshov, Sweden  
e-mail: [torbjorn.claesson@neova.se](mailto:torbjorn.claesson@neova.se)  
phone: +46703734802

Secretariat  
Mr. Claes Rülcker / Ingrid Kyllerstedt  
Svensk Torv  
c/o Neova AB  
Arenavägen 33  
121 77 Johanneshov, Sweden  
phone: +46 70 240 33 15  
e-mail: [claes.rulcker@svensktorv.se](mailto:claes.rulcker@svensktorv.se)  
web: [www.torvforsk.se](http://www.torvforsk.se)

*for updates visit  
[www.peatlands.org](http://www.peatlands.org) :)*

# **International Peatland Society**

**Business ID: 1074181-4**

Financial statement in accordance with the Accounting Ordinance for  
small- and micro-sized enterprises  
ajalta 01.01.2017 - 31.12.2017

This financial statement is to be stored until 31.12.2027



# Financial statement 01.01.2017 - 31.12.2017

## Index

Balance sheet .....	3
Income statement .....	5
Notes on the financial statements .....	6
Total income .....	6
Date and signatures.....	7
Auditor's note.....	7
List of accounting records and materials .....	8

The financial statement and accounting journals are to be stored for 10 years after the financial year.

Financial year's bookkeeping material is required to be stored for 6 years, beginning from the end of the year the financial year has ended.

This financial statement has been prepared by:  
TietoAkseli Oy, authorized accounting firm  
Puistokatu 2 C  
40100 Jyväskylä  
Finland

Contact information for International Peatland Society

Address: Nisulankatu 78, 40720 Jyväskylä

Business ID: 1074181-4

Domicile: Jyväskylä

# Balance sheet

	31.12.2017	31.12.2016
<b>ASSETS</b>		
<b>NON-CURRENT-ASSETS</b>		
<b>Tangible assets</b>		
Machinery and equipment	1 807,22	2 409,63
<b>Tangible assets in total</b>	1 807,22	2 409,63
<b>NON-CURRENT ASSETS TOTAL</b>	1 807,22	2 409,63
<b>CURRENT ASSETS</b>		
<b>Receivables</b>		
<b>Short term</b>		
Trade debtors	27 275,15	31 179,50
Other receivables	399,47	1 031,12
Prepayments and accrued income	6 935,33	218,35
<b>Short-term receivables in total</b>	34 609,95	32 428,97
<b>Total receivables</b>	34 609,95	32 428,97
<b>Cash in hand and at banks</b>	211 001,27	127 088,29
<b>CURRENT ASSETS TOTAL</b>	245 611,22	159 517,26
<b>ASSETS IN TOTAL</b>	247 418,44	161 926,89

	31.12.2017	31.12.2016
<b>LIABILITIES</b>		
<b>CAPITAL AND RESERVES</b>		
<b>Retained earnings</b>	148 956,11	147 618,65
<b>Surplus (-deficits) for the financial year</b>	81 163,15	1 337,46
<b>CAPITAL AND RESERVES TOTAL</b>	230 119,26	148 956,11
<b>CREDITORS</b>		
<b>Short term</b>		
Accounts Payables	7 930,02	1 159,78
Other creditors	929,62	2 578,30
Accruals and deferred income	8 439,54	9 232,70
<b>Short term creditors total</b>	17 299,18	12 970,78
<b>Creditors in total</b>	17 299,18	12 970,78
<b>LIABILITIES IN TOTAL</b>	247 418,44	161 926,89



# Income statement

	01.01.2017 - 31.12.2017	01.01.2016 - 31.12.2016
<b>ACTUAL OPERATION</b>		
<b>PUBLISHING</b>		
Income	7 519,00	8 007,33
Expenses	-6493,96	-4 986,33
<b>PUBLISHING TOTAL</b>	1 025,04	3 021,00
<b>CONFERENCES</b>		
Income	43 880,76	0,00
Expenses	0,00	-804,00
<b>CONFERENCES TOTAL</b>	43 880,76	-804,00
<b>PROJECTS</b>		
Income	0,00	10 000,00
Expenses	-11 257,80	-13 576,27
<b>PROJECTS TOTAL</b>	-11 257,80	-3 576,27
<b>OTHER ACTUAL OPERATION</b>		
<b>Income</b>		
Income	3 250,00	4 053,39
<b>Expenses</b>		
Wages and salaries	-49 261,08	-74 587,80
Pensions	-8 665,53	-13 184,75
Other insurances required by law	-1134,30	-2 571,66
Depreciations	-602,41	-803,21
Other expenses	-39 135,78	-56 372,70
<b>OTHER ACTUAL OPERATION TOTAL</b>	-95549,10	-143 466,73
<b>ACTUAL OPERATION TOTAL</b>	-61901,10	-144 826,00
<b>SURPLUS-/OPERATING DEFICIT</b>	-61901,10	-144 826,00
<b>FUNDRAISING</b>		
Income	145 869,15	147 870,00
Expenses	-2 820,50	-1 668,00
<b>FUNDRAISING TOTAL</b>	143 048,65	146 202,00
<b>TUOTTO- /KULUJÄÄMÄ</b>	81 147,55	1 376,00
<b>INVESTMENT AND FINANCING ACTIVITY</b>		
Income	16,93	0,00
Expenses	-1,33	-38,54
<b>INVESTMENT AND FINANCING ACTIVITY</b>	15,60	-38,54
<b>SURPLUS-/OPERATING DEFICIT</b>	81 163,15	1 337,46
<b>SURPLUS (-DEFICIT) FOR THE FINANCIAL YEAR</b>	81 163,15	1 337,46

inc				International Peatland Society
Accounting report type				IPS, new income statement report
Receipt status				Business transactions
Receipt date				01.01.2017 - 31.12.2017
Report length				All accounts
Report columns				Total sum for selected period
Comparison data				Budget

	realised 1-12-2017	realised % of budget	difference realised to budget	Budget 2017/2018	Realised 2016
<b>INCOME STATEMENT</b>					
<b>INCOME</b>					
Membership fees					
National Committee fees	28 418 €	103 %	800 €	27 618 €	27 270 €
Corporate and industrial fees	111 890 €	101 %	1 400 €	110 490 €	113 000 €
Individual member fees	1 127 €	96 %	-49 €	1 176 €	1 275 €
Company fees	4 218 €	77 %	-1 272 €	5 490 €	6 200 €
Student member fees	216 €	150 %	72 €	144 €	125 €
<b>Membership fees total</b>	<b>145 869 €</b>	<b>101 %</b>	<b>951 €</b>	<b>144 918 €</b>	<b>147 870 €</b>
Publishing					
Sale of magazines	80 €	133 %	20 €	60 €	60 €
Advertisement income	7 200 €	90 %	-800 €	8 000 €	7 350 €
Sales of publications	239 €	100 %	-1 €	240 €	388 €
Other publication income	0 €	0 %	-200 €	200 €	209 €
<b>Publishing total</b>	<b>7 519 €</b>	<b>88 %</b>	<b>-981 €</b>	<b>8 500 €</b>	<b>8 007 €</b>
Events					
Travelling and meeting income	0 €		0 €	0 €	0 €
Conference income (15% Congress commi	43 881 €		43 881 €	0 €	0 €
<b>Events total</b>	<b>43 881 €</b>		<b>43 881 €</b>	<b>0 €</b>	<b>0 €</b>
Other					
Health insurance refunds	0 €	0 %	-200 €	200 €	222 €
Insurance compensations (travel)	0 €		0 €		
Grant contributions	3 250 €	100 %	0 €	3 250 €	4 053 €
Project income	0 €		0 €	0 €	10 000 €
Interest income	0 €		0 €	0 €	
Other income	17 €		17 €	0 €	
<b>Other income total</b>	<b>3 267 €</b>	<b>95 %</b>	<b>-183 €</b>	<b>3 450 €</b>	<b>14 276 €</b>
<b>INCOME TOTAL</b>	<b>200 536 €</b>	<b>128 %</b>	<b>43 668 €</b>	<b>156 868 €</b>	<b>170 153 €</b>
<b>EXPENSES</b>					
Staff and external services					
Salaries	-49 261 €	103 %	-1 561 €	-47 700 €	-74 588 €
Auditing	-1 550 €	72 %	600 €	-2 150 €	-2 195 €
Accounting	-5 760 €	89 %	740 €	-6 500 €	-6 481 €
Social security	-517 €	74 %	183 €	-700 €	-1 526 €
Pension funds	-8 666 €	96 %	365 €	-9 030 €	-13 185 €
Insurances required by law	-617 €	103 %	-17 €	-600 €	-1 045 €
Healthcare	-414 €	52 %	386 €	-800 €	-437 €
Other social costs	-254 €	94 %	16 €	-270 €	-266 €
Training	-250 €	100 %	0 €	-250 €	-294 €
Reserve for new SG brutto	0 €	0 %	7 500 €	-7 500 €	
New SG social costs	0 €	0 %	1 500 €	-1 500 €	
<b>Staff and external services total</b>	<b>-67 289 €</b>	<b>87 %</b>	<b>9 711 €</b>	<b>-77 000 €</b>	<b>-100 016 €</b>
Facilities and administration					
Rent	-6 171 €	91 %	629 €	-6 800 €	-8 965 €
Cleaning	-94 €		-94 €	0 €	0 €
Office equipment	-600 €	200 %	-300 €	-300 €	-1 390 €
Office materials	-175 €	87 %	25 €	-200 €	-131 €
Printing and copying	-2 279 €	114 %	-279 €	-2 000 €	-1 889 €
Books and magazines	0 €	0 %	50 €	-50 €	-80 €
Mailing	-988 €	66 %	512 €	-1 500 €	-2 107 €
Phone and internet	-485 €	37 %	815 €	-1 300 €	-1 198 €
IT and maintenance	-1 308 €	131 %	-308 €	-1 000 €	-835 €



	realised 1-12-2017	realised % of budget	difference realised to budget	Budget 2017/2018	Realised 2016
Office catering and staff occasions	-110 €	55 %	90 €	-200 €	-51 €
Other insurances	-1 216 €	101 %	-16 €	-1 200 €	-1 132 €
Other costs	-231 €	51 %	219 €	-450 €	-6 €
<b>Facilities and administration total</b>	<b>-13 655 €</b>	<b>91 %</b>	<b>1 345 €</b>	<b>-15 000 €</b>	<b>-17 784 €</b>
Travelling					
Domestic travelling and accommodation	-559 €	112 %	-59 €	-500 €	-857 €
Domestic allowances	-183 €	92 %	17 €	-200 €	-256 €
Foreign allowances	-885 €	59 %	615 €	-1 500 €	-1 540 €
Mileage allowances	-410 €	137 %	-110 €	-300 €	-154 €
Secretariat foreign travelling and accommo	-1 780 €	44 %	2 220 €	-4 000 €	-6 450 €
EB travelling and accommodation	-563 €	14 %	3 437 €	-4 000 €	-3 896 €
SAB travelling and accommodation	-886 €	22 %	3 114 €	-4 000 €	-3 307 €
Meeting costs/room rents	-1 408 €	56 %	1 092 €	-2 500 €	-2 455 €
Representation / catering	-456 €	46 %	544 €	-1 000 €	-665 €
Registration fees	-207 €	21 %	793 €	-1 000 €	-2 398 €
Other travelling costs (conv + jakarta)*	-3 311 €	331 %	-2 311 €	-1 000 €	-1 446 €
<b>Travelling total</b>	<b>-10 648 €</b>	<b>53 %</b>	<b>9 352 €</b>	<b>-20 000 €</b>	<b>-23 422 €</b>
Publishing					
Online journal Mires and Peat	-5 000 €	100 %	0 €	-5 000 €	-4 019 €
Proofreading + translations	-956 €	239 %	-556 €	-400 €	-474 €
Other publication costs	-30 €	30 %	70 €	-100 €	-3 €
Website and email	-508 €	102 %	-8 €	-500 €	-491 €
Book scanning	0 €	0 %	130 €	-130 €	0 €
<b>Publishing total</b>	<b>-6 494 €</b>	<b>106 %</b>	<b>-364 €</b>	<b>-6 130 €</b>	<b>-4 986 €</b>
Other					
Other costs	0 €	0 %	600 €	-600 €	0 €
Project expenses			0 €	0 €	-13 576 €
Recruiting SG**	-2 178 €		22 €	-2 200 €	
Peat Dialogue	0 €		5 000 €	-5 000 €	
Asian Round Table*			5 000 €	-5 000 €	
Sphagnum Farming	-5 057 €	101 %	-57 €	-5 000 €	
China 1	-6 200 €		-6 200 €	0 €	
Conventions*			10 000 €	-10 000 €	
Conference expenses	0 €		0 €	0 €	-804 €
Award of Excellence/Allan Robertson Grant	-3 500 €	82 %	750 €	-4 250 €	-4 750 €
Marketing	-88 €	88 %	12 €	-100 €	-78 €
Membership fees	-83 €	94 %	5 €	-88 €	-83 €
<b>Others total</b>	<b>-17 106 €</b>	<b>53 %</b>	<b>15 132 €</b>	<b>-32 238 €</b>	<b>-19 291 €</b>
Financial					
Credit losses	-2 821 €	56 %	2 180 €	-5 000 €	-1 668 €
Depreciations	-602 €	100 %	-2 €	-600 €	-803 €
Banking fees	-661 €	94 %	39 €	-700 €	-658 €
Webshop/credit card fees	-95 €	48 %	105 €	-200 €	-149 €
Interest expenses	-1 €		-1 €	0 €	-7 €
Other financial expenses	0 €		0 €	0 €	-31 €
<b>Financial total</b>	<b>-4 180 €</b>	<b>64 %</b>	<b>2 320 €</b>	<b>-6 500 €</b>	<b>-3 317 €</b>
<b>EXPENSES TOTAL</b>	<b>-119 372 €</b>	<b>76 %</b>	<b>37 496 €</b>	<b>-156 868 €</b>	<b>-168 816 €</b>
<b>SURPLUS/DEFICIT FOR THE FINANCIAL YEAR</b>	<b>81 164 €</b>		<b>81 164 €</b>	<b>0 €</b>	<b>1 337 €</b>

# Notes on the financial statements

## Notes on the preparation of the financial statements

The financial statement has been prepared by using the valuation and sequencing presumption of principles and procedures in accordance with the Accounting Ordinance for small and micro-sized enterprises.

## Notes on employees and members of governing bodies

	31.12.2017	31.12.2016
Average number of employees per annum	1	1

## Notes on capital and reserves

	31.12.2017	31.12.2016
Retained surplus	148 956,11	147 618,65
Surplus (-deficit) for the financial year	81 163,15	1 377,46
<b>Capital and reserves</b>	<b>230 119,26</b>	<b>148 956,11</b>

## Total income

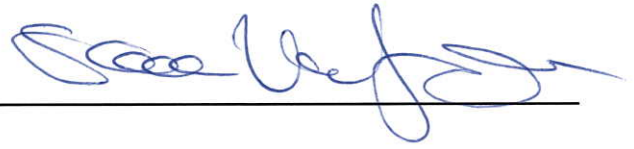
	31.12.2017	31.12.2016
Total income	200 535,82	169 930,72
Total expenditure	-118 770,28	-167 790,05
Depreciation	-602,41	-803,21
<b>Surplus (-deficit) for the financial year</b>	<b>81 163,13</b>	<b>1 337,46</b>



## Date and signatures


Vilnius 16. April 2018

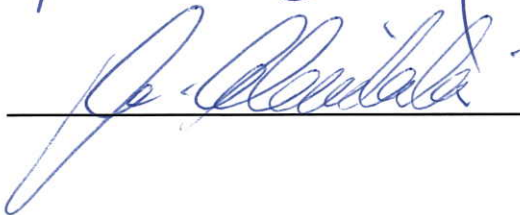


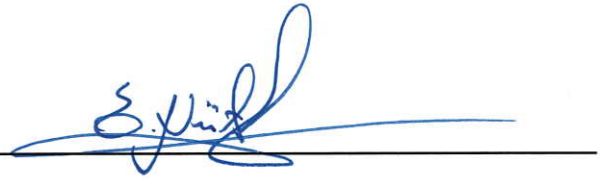












## Auditor's note

Auditor report has been issued today.

Jyväskylä 17. April 2018



DHS Audit Partners Oy

Auditor Mr. Arto Saarinen, authorized public accountant

# List of accounting records and materials

## Accounting records and materials and method of preserving

### Financial statement

Financial statement	Separately bound
Balance sheet specifications	Separately bound

### Chart of accounts and balance list

Account-specific income statement	Digital archive
Account-specific balance sheet	Digital archive
Account-specific balance sheet	Digital archive

### Accounting records

Accounting journal	Digital archive
General ledger	Digital archive
Accounts receivable	Digital archive
Accounts payable	Digital archive
Payroll accounting	Digital archive
Salary/wage ledger	Digital archive

### Receipts

Bank statements	Digital archive
Sales invoices	Digital archive
Purchase invoices	Digital archive
Salary statements and reports	Digital archive
Memo vouchers	Digital archive
Kausiveroilmoitukset	Digital archive
Note vouchers	Digital archive

All material is digitally archived. Backup files are archived on CD-ROM.



**AUDITOR'S REPORT***(Translation of the Finnish original)***To the Annual General Meeting of International Peatland Society****Report on the Audit of Financial Statements****Opinion**

I have audited the financial statements of International Peatland Society (business identity code 1074181-4) for the year ended 31 December, 2017. The financial statements comprise the balance sheets, the income statements and notes.

In my opinion, the financial statements give a true and fair view of the society's financial performance and financial position in accordance with the laws and regulations governing the preparation of financial statements in Finland and comply with statutory requirements.

**Basis for Opinion**

I conducted my audit in accordance with good auditing practice in Finland. My responsibilities under good auditing practice are further described in the *Auditor's Responsibilities for the Audit of Financial Statements* section of my report. I am independent of the society in accordance with the ethical requirements that are applicable in Finland and are relevant to my audit, and I have fulfilled my other ethical responsibilities in accordance with these requirements. I believe that the audit evidence I have obtained is sufficient and appropriate to provide a basis for my opinion.

**Responsibilities of the Board of Directors**

The Board of Directors is responsible for the preparation of financial statements that give a true and fair view in accordance with the laws and regulations governing the preparation of financial statements in Finland and comply with statutory requirements. The Board of Directors is also responsible for such internal control as they determine is necessary to enable the preparation of financial statements that are free from material misstatement, whether due to fraud or error.

In preparing the financial statements, the Board of Directors is responsible for assessing the society's ability to continue as going concern, disclosing, as applicable, matters relating to going concern and using the going concern basis of accounting. The financial statements are prepared using the going concern basis of accounting unless there is an intention to liquidate the society or cease operations, or there is no realistic alternative but to do so.

(Note: Board of Directors is the equivalent of the IPS Executive Board in the Auditor's translation of the Finnish statement.)

## Auditor's Responsibilities in the Audit of Financial Statements

My objectives are to obtain reasonable assurance on whether the financial statements as a whole are free from material misstatement, whether due to fraud or error, and to issue an auditor's report that includes my opinion. Reasonable assurance is a high level of assurance, but is not a guarantee that an audit conducted in accordance with good auditing practice will always detect a material misstatement when it exists. Misstatements can arise from fraud or error and are considered material if, individually or in aggregate, they could reasonably be expected to influence the economic decisions of users taken on the basis of the financial statements.

As part of an audit in accordance with good auditing practice, I exercise professional judgement and maintain professional skepticism throughout the audit. I also:

- Identify and assess the risks of material misstatement of the financial statements, whether due to fraud or error, design and perform audit procedures responsive to those risks, and obtain audit evidence that is sufficient and appropriate to provide a basis for our opinion. The risk of not detecting a material misstatement resulting from fraud is higher than for one resulting from error, as fraud may involve collusion, forgery, intentional omissions, misrepresentations, or the override of internal control.
- Obtain an understanding of internal control relevant to the audit in order to design audit procedures that are appropriate in the circumstances, but not for the purpose of expressing an opinion on the effectiveness of the parent company's or the group's internal control.
- Evaluate the appropriateness of accounting policies used and the reasonableness of accounting estimates and related disclosures made by management.
- Conclude on the appropriateness of the Board of Directors' use of the going concern basis of accounting and based on the audit evidence obtained, whether a material uncertainty exists related to events or conditions that may cast significant doubt on the parent company's or the group's ability to continue as a going concern. If I conclude that a material uncertainty exists, I am required to draw attention in my auditor's report to the related disclosures in the financial statements or, if such disclosures are inadequate, to modify my opinion. My conclusions are based on the audit evidence obtained up to the date of our auditor's report. However, future events or conditions may cause the company to cease to continue as a going concern.
- Evaluate the overall presentation, structure and content of the financial statements, including the disclosures, and whether the financial statements represent the underlying transactions and events so that the financial statements give a true and fair view.

I communicate with those charged with governance regarding, among other matters, the planned scope and timing of the audit and significant audit findings, including any significant deficiencies in internal control that I identify during our audit.



## Other reporting requirements

### Other information

The Board of Directors is responsible for the other information. The other information comprises information included in the report of the Board of Directors. My opinion on the financial statements does not cover the other information.

In connection with my audit of the financial statements, my responsibility is to read the information included in the report of the Board of Directors and, in doing so, consider whether the information included in the report of the Board of Directors is materially inconsistent with the financial statements or my knowledge obtained in the audit, or otherwise appears to be materially misstated. My responsibility also includes considering whether the report of the Board of Directors has been prepared in accordance with the applicable laws and regulations.

In my opinion, the information in the report of the Board of Directors is consistent with the information in the financial statements and the report of the Board of Directors has been prepared in accordance with the applicable laws and regulations requirements.

If, based on the work we have performed, I conclude that there is a material misstatement in the information included in the report of the Board of Directors; we are required to report this fact. I have nothing to report in this regard.

In Jyväskylä, 17. April 2018



Arto Saarinen  
APA



# My Activities

*Write your own IPS story 2017:*



Do you remember?



[www.ipsjubileesymposium.nl](http://www.ipsjubileesymposium.nl)

# Jubilee Symposium

Wise use of peatlands and peat  
in the past and in the future

Including gala party  
**11-13 September 2018**  
Rotterdam, the Netherlands

With subjects such as:

- subsidence of drained peatlands;
- CO<sub>2</sub> emissions;
- submerged drains;
- paludiculture;
- landscape history;
- the use of peat in horticulture;
- planning of worldwide demand for food production;
- future availability of peat
- and more.